

NRC Publications Archive Archives des publications du CNRC

Determination of ice water content (IWC) in tropical convective clouds from X-band dual-polarization airborne radar

Nguyen, Cuong M.; Wolde, Mengistu; Korolev, Alexei

This publication could be one of several versions: author's original, accepted manuscript or the publisher's version. / La version de cette publication peut être l'une des suivantes : la version prépublication de l'auteur, la version acceptée du manuscrit ou la version de l'éditeur.

For the publisher's version, please access the DOI link below. / Pour consulter la version de l'éditeur, utilisez le lien DOI ci-dessous.

Publisher's version / Version de l'éditeur:

<https://doi.org/10.5194/amt-12-5897-2019>

Atmospheric Measurement Techniques, 12, 11, pp. 5897-5911, 2019-11-08

NRC Publications Archive Record / Notice des Archives des publications du CNRC :

<https://nrc-publications.canada.ca/eng/view/object/?id=3e00d8fb-0bef-4ece-823c-db18dd73f421>

<https://publications-cnrc.canada.ca/fra/voir/objet/?id=3e00d8fb-0bef-4ece-823c-db18dd73f421>

Access and use of this website and the material on it are subject to the Terms and Conditions set forth at

<https://nrc-publications.canada.ca/eng/copyright>

READ THESE TERMS AND CONDITIONS CAREFULLY BEFORE USING THIS WEBSITE.

L'accès à ce site Web et l'utilisation de son contenu sont assujettis aux conditions présentées dans le site

<https://publications-cnrc.canada.ca/fra/droits>

LISEZ CES CONDITIONS ATTENTIVEMENT AVANT D'UTILISER CE SITE WEB.

Questions? Contact the NRC Publications Archive team at

PublicationsArchive-ArchivesPublications@nrc-cnrc.gc.ca. If you wish to email the authors directly, please see the first page of the publication for their contact information.

Vous avez des questions? Nous pouvons vous aider. Pour communiquer directement avec un auteur, consultez la première page de la revue dans laquelle son article a été publié afin de trouver ses coordonnées. Si vous n'arrivez pas à les repérer, communiquez avec nous à PublicationsArchive-ArchivesPublications@nrc-cnrc.gc.ca.



Determination of ice water content (IWC) in tropical convective clouds from X-band dual-polarization airborne radar

Cuong M. Nguyen¹, Mengistu Wolde¹, and Alexei Korolev²

¹Flight Research Laboratory, National Research Council Canada, Ottawa, K1A 0R6, Canada

²Environment and Climate Change Canada, Toronto, J8X 4C6, Canada

Correspondence: Cuong M. Nguyen (cuong.nguyen@nrc-cnrc.gc.ca)

Received: 14 February 2019 – Discussion started: 18 March 2019

Revised: 18 September 2019 – Accepted: 23 September 2019 – Published: 8 November 2019

Abstract. This paper presents a methodology for ice water content (IWC) retrieval from a dual-polarization side-looking X-band airborne radar. Measured IWC from aircraft in situ probes is weighted by a function of the radar differential reflectivity (Z_{dr}) to reduce the effects of ice crystal shape and orientation on the variation in IWC – specific differential phase (K_{dp}) joint distribution. A theoretical study indicates that the proposed method, which does not require a knowledge of the particle size distribution (PSD) and number density of ice crystals, is suitable for high-ice-water-content (HIWC) regions in tropical convective clouds. Using datasets collected during the High Altitude Ice Crystals – High Ice Water Content (HAIC-HIWC) international field campaign in Cayenne, French Guiana (2015), it is shown that the proposed method improves the estimation bias by 35 % and increases the correlation by 4 % on average, compared to the method using specific differential phase (K_{dp}) alone.

1 Introduction

Ice water content (IWC) and its spatial distribution inside clouds are known for the significant effects they exert on the Earth's energy budget and hydrological cycle (e.g. Stocker et al., 2013). Aside from its significant effect on the atmospheric processes, high ice water content ($IWC > 1 \text{ g m}^{-3}$), which is resultant from a high concentration of small ice crystals in tropical mesoscale convective systems, has been linked to aircraft incidents and accidents (Lawson et al., 1998; Mason et al., 2006; Grzych and Mason, 2010; Strapp et al., 2016). Since early 1990s, over 150 engine rollback and power-loss events have been attributed to the ingestion

of ice particles produced in convective clouds (Grzych and Mason, 2010). Many studies have been undertaken to understand the details of the meteorological processes responsible for producing areas of HIWC. Equally important, methods using multiplatform observations from ground, airborne, and space supplemented by weather models are being developed for improving detection and avoidance of high-IWC regions that would be potentially hazardous for aviation (Strapp et al., 2016).

Conventional methods of deducing IWC from radar measurements assume a statistical relationship between the radar reflectivity factor (Z) and IWC. Such relationships are usually obtained based on IWC and Z calculated from in situ measurements of particle size distributions (PSDs) and a size-to-mass parameterization ($m(D)$) (e.g. Heymsfield, 1977; Hogan et al., 2006). In recent studies (Protat et al., 2016), IWC was measured directly by bulk microphysical probes and Z was measured from either an airborne or ground-based radar. However, all of these studies show large uncertainties in the IWC– Z relationship despite the introduction of additional constraints such as air temperature (T) or the inclusion of refined $m(D)$ in the IWC calculations (Fontaine et al., 2014; Protat et al., 2016).

Lu et al. (2015) conducted an extensive simulation on both millimetre- and centimetre-wavelength radar and concluded that the IWC– Z relationship is very sensitive to ice crystal PSDs (from 1 to 2 orders of magnitude in variability) and as such is not recommended for IWC retrievals. Another approach employs polarimetric observations. The non-spherical geometry of ice crystals provides information on the types and habits of ice crystals (Matrosov et al., 1996; Wolde and Vali, 2001). It has been shown that the radar-

specific differential phase (K_{dp}) is less dependent on PSD; hence, it is potentially useful for IWC retrieval (Vivekanandan et al., 1994; Lu et al., 2015). Aydin and Tang (1997) suggested the possibility of combining K_{dp} and differential reflectivity ratio (Z_{dr}) for IWC estimation for clouds composed of pristine ice crystals. However, even for the polarimetric approach, knowledge about ice crystal mass density (ρ) and axis ratio is still needed to obtain accurate estimates of IWC. Simulation results (Lu et al., 2015) show that if only the general type of ice crystals is known, errors in IWC retrieval based on K_{dp} are within 30% of their true values. Unfortunately, the aforementioned parameters (ρ and particle axis ratio) are, in general, unknown and additional assumptions are often invoked. Ryzhkov et al. (1998), for instance, took into consideration ice crystal shapes and size-density parameterization of scatterers to reduce the uncertainty in IWC estimates. Modelling work (Ryzhkov et al., 1998) shows that for average-sized pristine and moderately aggregated ice crystals, the ratio between the reflectivity difference $Z_{DP} = Z_H - Z_V$ and K_{dp} is practically insensitive to the shape and density of the ice particles and is a good estimator of their mass.

In this paper we present a new method for assessment of IWC based on the K_{dp} and Z_{dr} measurements from a side-looking X-band airborne radar in tropical mesoscale convective systems (MCSS). The IWC will be weighted with a function of Z_{dr} to minimize the dependency of the IWC– K_{dp} relationship on the particle shape and orientation, hence improving the IWC estimation errors without knowledge of the PSD or density of the ice particles. The proposed method is examined using datasets collected during the High Altitude Ice Crystal – High Ice Water Content (HAIC-HIWC) international field campaign in Cayenne, French Guiana, in May 2015. The campaign was carried out to enhance the knowledge of microphysical properties of high-altitude ice crystals and mechanisms of their formation in deep tropical convective systems in order to address aviation safety issues related to engine icing (Strapp et al., 2016).

2 Background

2.1 Polarimetric parameters characterizing ice crystals

In conventional single-polarization Doppler radar, measured radar reflectivity and radial velocity are used to assess cloud and precipitation spatial variability, precipitation rate, and characteristic hydrometeor types. In dual-polarization radar systems, measurements are made at more than one polarization state (Bringi and Chandrasekar, 2001). Such systems can be configured in several ways depending on the measurement goals and the choice of orthogonal polarization states. In this study, the results and discussions will be limited to the consideration of the linear horizontal and vertical (H/V) polarization basis. The intrinsic backscattering properties of the

hydrometeors for the two polarization states enable the characterization of microphysical properties such as size, shape, and spatial orientation of the cloud/precipitation particles in the radar resolution volume. Hence, using polarization, it is generally possible to achieve more accurate classification of hydrometeor types and estimate hydrometeor amounts such as rainfall rate. Polarimetric backscattering properties of hydrometeors depend on many factors such as radar wavelength, radar elevation angle, particle size, shape, orientation, etc. In this section, we summarize how the differential reflectivity (Z_{dr} , dB) and the specific differential phase (K_{dp} , $^{\circ} \text{km}^{-1}$) are measured by a polarimetric Doppler radar in the Rayleigh scattering regime and at low radar elevation angles.

In general, the differential reflectivity of an ensemble of n particles of size D and axis ratio r is given by Eq. (1) (Eq. 7.4 in Bringi and Chandrasekar, 2001),

$$Z_{dr} = 10 \log_{10} \left[\frac{|S_{hh}(r, D)|^2}{|S_{vv}(r, D)|^2} \right], \quad (1)$$

where S_{hh} and S_{vv} are the diagonal elements of the backscattering matrices in the forward-scatter alignment (FSA) convention.

The specific differential phase is defined as (Eq. 7.6 in Bringi and Chandrasekar, 2001)

$$K_{dp} = \frac{2\pi n}{k} \text{Re} [f_{hh}(r, D) - f_{vv}(r, D)], \quad (2)$$

where n is the number concentration in reciprocal litres, k is wavenumber in reciprocal metres, $\text{Re}[\]$ stands for the real part of a complex number, and f_{hh} and f_{vv} are the forward-scattering amplitudes in m at horizontal and vertical polarization, respectively. Equation (2) shows that Z_{dr} does not change with increasing number of ice particles while K_{dp} is proportional to n . Consequently, for a large number of small particles with the axis ratio close to unity ($r \approx 1$), $Z_{dr} \rightarrow 0$ dB and the second term in Eq. (2) becomes small but K_{dp} can still be large.

In a simple form of the calculations of Z_{dr} and K_{dp} of ice crystals, it is customary to approximate columns as homogeneous prolate spheroids and plates as homogeneous oblate spheroids. In the case of side incidence, the elevation angle is assumed to be close to zero and there is no (or very small) canting in the vertical plane. In the absence of wind shear and turbulence, and assuming a perfectly aligned spheroid model, Z_{dr} and K_{dp} can be expressed as functions of ice particle size, axis ratio, and the relative permittivity of the particle (ϵ). For example, for oblate spheroid ice particles with a particle size distribution, $N(D)$ (Eq. 7.5–7.8 in Bringi and Chandrasekar,

2001),

$$|S_{hh}(r, D)| \approx \frac{k^2}{4\pi} \frac{V(D)|\varepsilon - 1|}{\left[1 + \frac{1}{2}(1 - \lambda_o)|\varepsilon - 1|\right]}, \quad (3)$$

$$|S_{vv}(r, D)| \approx \frac{k^2}{4\pi} \frac{V(D)|\varepsilon - 1|}{[1 + \lambda_o|\varepsilon - 1|]}, \quad (4)$$

$$Z_{hh,vv} = \frac{\lambda^4}{\pi^5 K_p^2} \int 4\pi |S_{hh,vv}|^2 N(D) dD, \quad (5)$$

$$K_{dp} = \frac{k}{2} \int V(D)N(D) dD, \quad (6)$$

where K_p is dielectric factor of water at 0°C ($K_p^2 = 0.93$); $V(D)$ is the particle volume; λ_o is the depolarizing factor, which is only a function of the axis ratio $r = b/a$ (for oblate particles; a is the semi-major axis length; and b is the semi-minor axis length ($a > b$)). The depolarizing factor is defined as

$$\lambda_o = \lambda(\text{oblate}) = \frac{1 + f^2}{f^2} \left(1 - \frac{1}{f} \tan^{-1} f\right);$$

$$f^2 = \frac{1}{r^2} - 1. \quad (7)$$

A similar equation for K_{dp} can also be derived for prolate spheroid ice particles with symmetry axis parallel to the horizontal plane (Hogan et al., 2006).

On the other hand, the IWC can be defined in terms of the size distribution,

$$\text{IWC} = \int \rho(D) V(D)N(D) dD, \quad (8)$$

where $\rho(D)$ is the mass density of ice crystals with size D .

2.2 Polarimetric methods for IWC retrieval

An inspection of Eqs. (3) and (4) suggests that for small ice crystal particles, the radar cross section ($\sigma_{hh,vv} = 4\pi |S_{hh,vv}|^2$) is roughly proportional to the square of the ice particle mass ($\rho_i^2(D) V(D)^2$), a conclusion also confirmed by results from simulated data (Lu et al., 2015). In addition, according to Lu et al. (2015), for particles with sizes comparable to or larger than the radar wavelength, there is no clear relationship between the radar cross section and ice particle mass due to the Mie resonance effects. In either case, $\sigma_{hh,vv}$ is not directly proportional to the particle mass. Hence, the Z -IWC relationship depends strongly on the particle size distribution and the radar frequency. Consequently, using Z only to estimate IWC without knowledge of the PSD can lead to errors as large as 1 order of magnitude. On the other hand, Eq. (6) indicates that if the terms in square brackets (α) are proportional to the ice density ($\rho(D)$), then the K_{dp} -IWC relationship is independent of PSD. The proportionality constant depends on several factors such as the ice crystal type, orientation, and the measurement elevation angle. It is shown

that the variability of this proportionality constant significantly increases at large elevation angles (Lu et al., 2015). Furthermore, when the exact ice crystal type is known, averaged relative error in the estimated IWC using K_{dp} can be as small as 10 %, regardless of whether PSD is known or not. If the ice crystal types are unknown but can be generally categorized, the errors can be higher, but mostly less than 30 %. These numbers were averaged from elevations in the interval [0–70°]. If IWC is estimated using K_{dp} at small elevation angles (less than 10°) such as from a side-looking antenna, we would expect better results.

For a given radar volume, if the orientation of the ice crystal changes, the K_{dp} value changes (Eq. 7) while the IWC of the radar volume does not. Consequently, in the case of spatial variability of ice crystal shapes and orientations, the IWC estimation based solely on K_{dp} may be biased. To mitigate this problem, the measured IWC needs to be modified to include the information of the ice particles' orientation. One way to do this is to weight the measured IWC by a function of ice crystal shapes and orientations before applying a linear regression model to the K_{dp} -IWC relationship. In a simple approach, the weighting function can be in a form of Z_{DR}^a (Z_{DR} is the linear version of Z_{dr} and a is a constant coefficient) as suggested in Aydin and Tang (1997) (derived from their approximation $\text{IWC} \approx K_{dp}^a Z_{DR}^b$, where a and b are constant coefficients). Proceeding more rigorously, Ryzhkov et al. (1998, 2018) demonstrated that both K_{dp} and difference reflectivity Z_{DP} ($Z_{DP} = Z_H - Z_V$) are dependent on the particles' aspect ratios and orientation, whereas their ratio is very robust with respect to those factors. Indeed, in simulation and modelling work considering 12 different crystal habits, Ryzhkov et al. (2018) showed that the ratio Z_{DP}/K_{dp} in combination with reflectivity can be used to estimate IWC. In detail, for exponential size distribution and with an assumption of $\rho(D) = \alpha D^{-\beta}$, $\beta \approx 1$, $(1 - Z_{DR}^{-1})$ IWC is proportional to K_{dp} . Also, according to Ryzhkov et al. (2018), this approximation is almost insensitive to the ice habit, aspect ratio, and orientation of the ice particles, but is affected by the degree of riming. Hence, it works better for clouds with a low degree of riming. This condition might not be true for all types of ice clouds, but might be suitable for HIWC regions, which are often composed of a high concentration of small ice particles (Leroy et al., 2016).

At $Z_{DR} \approx 1$ (or $Z_{dr} \approx 0$ dB), the weighting function $(1 - Z_{DR}^{-1})$ is close to zero, and hence it can introduce large errors in the estimates. Therefore, there should be a certain threshold for Z_{dr} to determine how the weighting function would be calculated. In detail, if Z_{dr} is less than a threshold, the weighting function $(1 - Z_{DR}^{-1})$ is replaced by $(1 - Z_{DR}^{-1-\text{threshold}})$. In this paper, we use $Z_{DR-\text{threshold}} = 1.12$ (see Sect. 6 for more detailed derivation of this threshold value). This threshold is very close to a 1.15 threshold pro-

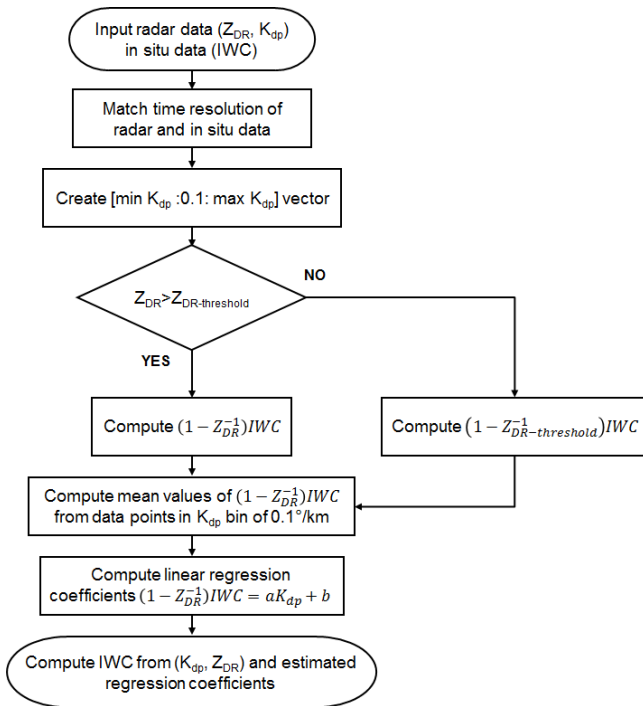


Figure 1. Flow chart of IWC retrieval using (K_{dp}, Z_{DR}) and in situ data. In this paper, $Z_{DR-threshold} = 1.12$.

posed by Ryzhkov et al. (1998) for “cold” storms for temperatures below -5°C .

In summary, there are two polarimetric methods for IWC retrieval, which will be investigated and compared in this paper. They are expressed as

$$IWC = a_1 K_{dp} + b_1, \quad (9)$$

$$(1 - Z_{DR}^{-1}) IWC = a_2 K_{dp} + b_2, \quad (10)$$

where model parameters (a_i, b_i) will be estimated from measured data. A flow chart of IWC retrieval using K_{dp} and Z_{DR} is shown in Fig. 1.

3 Airborne measurements

During the Cayenne HAIC-HIWC project, the NRC Convair CV-580 conducted 14 research flights in both continental and oceanic mesoscale convective systems (MCSs) with high IWC. All the flights were conducted during daytime only due to flight restrictions. Analysis of all the IR satellite imageries show that the Convair flights were performed close to the peak intensities of the targeted MCSs, which had a typical lifetime of 7.5 and 4.5 h for oceanic and continental MCSs, respectively (Walter Strapp, personal communication, 2019). So the fact that the flights were conducted only during the daytime did not prevent the flights from sampling of the storms during their peak intensities. For this campaign, the Convair aircraft was instrumented by the NRC and

Environment and Climate Change Canada with an array of in situ cloud microphysics probes, atmospheric sensors, and the NRC airborne W- and X-band (NAWX) Doppler dual-polarization radars (Wolde and Pazmany, 2005). The unique quasi-collocated in situ and radar data collected during the HAIC-HIWC mission provided a means for developing techniques for detection and estimation of high IWC that could be adopted in operational airborne weather radars.

3.1 Airborne radar data

In this study, dual-polarization radar data from the NRC airborne X-band radar (NAX) (Fig. 2) side-looking antenna are used. Some important radar parameters are given in Table 1. More detailed information on the radar system can be found in Wolde and Pazmany (2005). In the Cayenne project, the radar complex I and Q samples are processed to powers and complex pulse pair products according to the radar parameter specification table, and the products are recorded in binary format. Due to the size of the aircraft radar radome, the NAX dual-polarization parabolic side antenna is relatively small (0.66 m), hence exhibiting some limitations in terms of side lobe performance. The antenna orthomode transducer (OMT)–feedhorn combination is relatively large compared to the parabolic dish. The large feed structure creates some significant side lobes at $\pm 90^{\circ}$ planes. As a result, when the side lobes intercept targets with strong returns below the aircraft, such as the earth surface or a storm melting layer, significant returns from the side lobes will contaminate signals coming via the antenna’s main lobe. In most situations, the effect is more prominent at a range equal to or greater than the distance where the antenna side lobes hit the ground. At regions where signals are contaminated by ground clutter via the side lobes, the data are intermittent and exhibit large biases. Unfortunately, with the pulse pair data from the Cayenne campaign, methods to separate clutter from the precipitation signals are limited. To overcome this issue, a method is developed to detect regions with strong clutter contamination based on signal correlations between the nadir and zenith returns. If the correlation coefficient exceeds a predefined threshold, the corresponding side data in those regions are discarded. If the width of the discarded data region is relatively small (less than 300 m in radar range) it will be filled through interpolation. In addition, due to the limitation of the radar hardware, the measurements of dual-polarization parameters are not useable below a range of 1000 m from the aircraft, but reflectivity can be measured accurately from 450 m. Hence, in this work, radar profiles were extracted at a horizontal distance of 1000 m from the aircraft. This is not an ideal condition when the in situ data and the radar data are not spatially coincident. However, in most scenarios the advantage of having fine radar sampling volumes with a high order of accuracy in time synchronization between in situ probes overcomes the location offset. At large distances from cloud boundaries and convective cores, the microphysics proper-

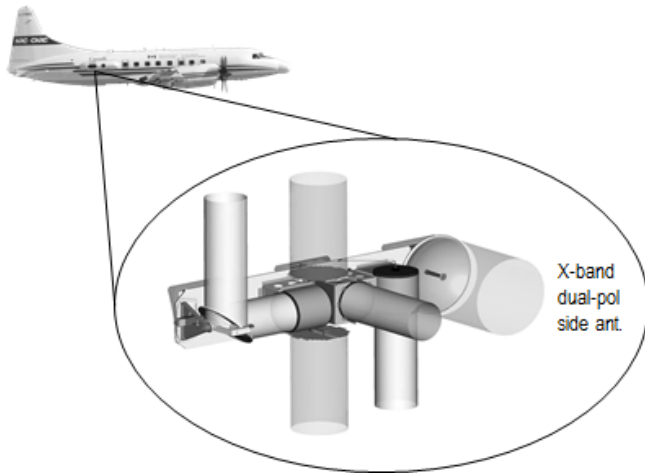


Figure 2. The NRC Convair CV-580 and the dual-polarization side-looking X-band radar.

Table 1. X-band radar parameters for the Cayenne campaign.

Parameter	Value
Frequency	9.41 GHz \pm 30 MHz
Side antenna beamwidth	3.5°
Pulse width/range resolution	500 ns/75 m
Dwell time	0.136 s
Sampling resolution	75 m

ties of glaciated clouds can be considered spatially quasi-uniform at scales of the order of a few hundred metres. This is specifically relevant to the measurements in MCSs during the HAIC-HIWC project. Moreover, there was no attenuation correction applied to reflectivity and Z_{dr} because in ice precipitation regions and at close range attenuation at the X-band is negligible.

For the Cayenne project, the in situ microphysical data are processed at 1 Hz, which is lower than that of the radar data. Hence, the radar data were decimated to match with temporal resolution of the in situ data. At the Convair CV-580 average ground speed of 100 ms^{-1} , this results in a 100 m radar sampling volume.

3.2 In situ data

For the project, the NRC Convair CV-580 was equipped with state-of-the-art in situ sensors for measurements of aircraft and atmospheric state parameters and cloud microphysics. There were multiple sensors to measure bulk liquid water content (LWC) and total water content (TWC), with hydrometeor size distribution ranging from small cloud drops to large precipitation particles. A detailed list of the Convair in situ sensors used during the Cayenne HIWC-HIWC project is provided in Wolde et al. (2016). Here we will briefly describe the in situ microphysical sensors used in correlating the air-

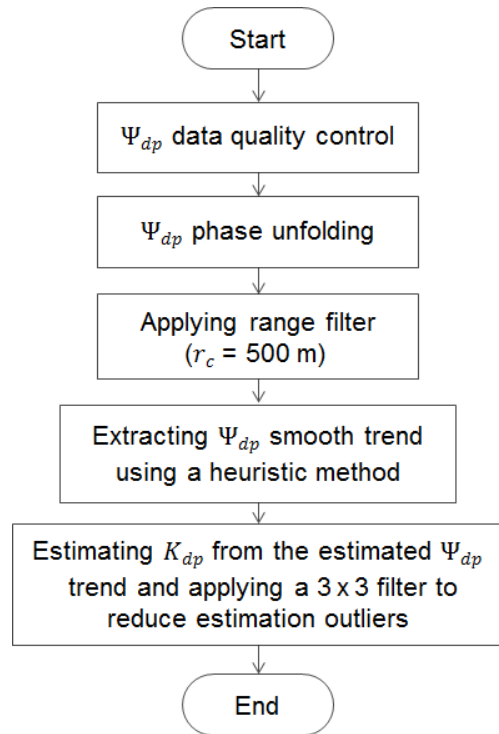


Figure 3. The NRC K_{dp} estimation algorithm for X-band radar flow chart.

borne radar measurements with regions of HIWC. TWC was measured by an Isokinetic probe (IKP2) that was specifically designed to measure very high TWC (Davison et al., 2008). Alternatively, IWC was estimated from the measured PSDs with the D – M parameterization tuned using IKP2 measurements. In the Cayenne Convair datasets, IWCs calculated from PSDs and measured by IKP2 agreed quite well and the difference between them in the HIWC regions on average did not exceed 15 %. Because the IKP2 data were not available in all flights, estimated IWC from PSDs (IWC_{PSD}) has been used in this work. Additionally, mean mass diameter (MMD) was also used to characterize the microphysical properties of the high-IWC regions and interpret X-band radar measurements. MMD was calculated from composite particle size distributions measured by SPEC 2D-S and DMT PIP 2-D imaging probes.

As shown in Korolev et al. (2018) in the MCSs studied during the Cayenne HAIC-HIWC project, the fraction of mixed-phase clouds at $-15^\circ\text{C} < T < -5^\circ\text{C}$ did not exceed 4.6 %, and in most mixed-phase cloud regions $LWC \ll IWC$. Hence, we did not filter out the very small fraction of liquid observed in our analysis; i.e. we assumed $TWC = IWC$. This finding significantly simplifies the processing and interpretation of cloud microphysical measurements.

4 K_{dp} estimation algorithm for X-band airborne weather radar

The radar specific differential phase (K_{dp}) is defined as the slope of the range profile of the differential propagation phase shift Φ_{dp} between horizontal and vertical polarization states (Bringi and Chandrasekar, 2001). The measured differential phase shift between the two signals at the H and V polarizations, Ψ_{dp} , contains both Φ_{dp} and differential backscatter phase shift δ_{dp} . If δ_{dp} is relatively constant or negligible, the profile of Ψ_{dp} can be used to estimate K_{dp} . The estimated phase Ψ_{dp} usually exhibits discontinuities due to phase wrapping, statistical fluctuations in estimation, and the gate-to-gate variation in δ_{dp} . Because the statistical fluctuations in the estimates of Ψ_{dp} will be magnified during the differentiation, resulting in a large variance of the K_{dp} estimates, the following considerations need to be addressed in the K_{dp} estimation algorithm.

Phase unfolding. Phase wrapping occurs when the total Φ_{dp} accumulation exceeds the unambiguous ranges. This depends on the system differential phase $\Phi_{dp}(0)$ and the cumulative phase due to the medium. The NAX radar operates in the simultaneous transmission mode (VHS) and the unambiguous range is 360° . The system differential phase $\Phi_{dp}(0)$ of NAX is about 64° . For the Cayenne dataset, no observations were made when the phase was folded.

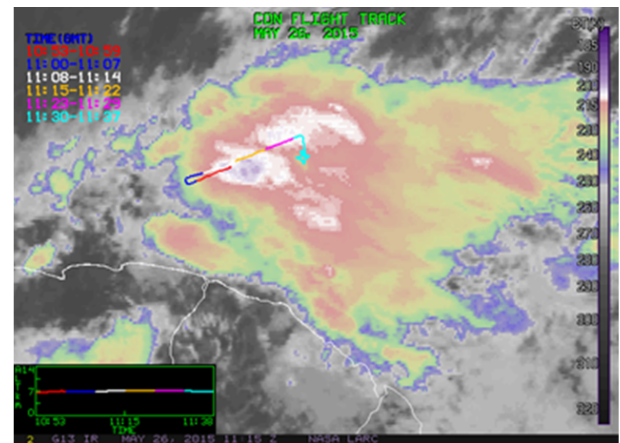
δ_{dp} “bump”. It seems that δ_{dp} was negligible in the HIWC environment in the Cayenne campaign. We did not observe the presence of significant changes in δ_{dp} over a short range.

Range filtering. In this work, the range scale was set at 500 m; thus the fluctuations at scales smaller than 500 m will be suppressed.

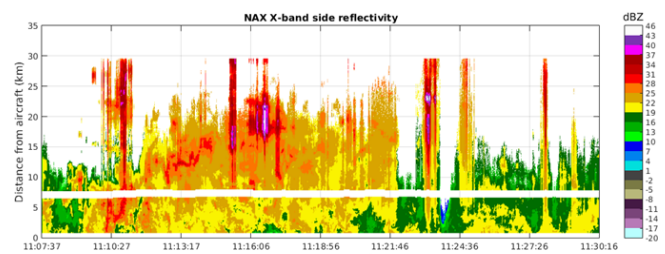
Once the phase data are quality controlled, filtered, and decimated to match the temporal resolution of the in situ data, a heuristic algorithm similar to one reported in Rotemberg (1999) is applied to the data to extract the Ψ_{dp} smooth trend and then K_{dp} is computed from it. This approach does not require an assumption of Φ_{dp} being a monotonically increasing function as it is in some other existing K_{dp} retrieval algorithms (Wang and Chandrasekar, 2009); therefore, it would also work well with negative K_{dp} , which possibly appears in ice clouds. Our preliminary analysis shows that the algorithm can provide estimates with standard deviation no greater than 1° km^{-1} . The NRC K_{dp} estimation algorithm is summarized in the flow chart below.

5 Results

In this section, results illustrating the performance of the proposed polarimetric algorithms are presented. In addition to the polarimetric method, we also include results from the conventional IWC– Z relations for comparison. Because the histogram of static temperature (not shown) indicated a bimodal distribution with two centres at around -5



(a)



(b)

Figure 4. Panel (a) shows IR GOES-13 image with the overlaid segments of the Convair CV-580 flight track on 26 May 2015. Different time segments of the flight track are shown by different colours. Panel (b) shows X-band side reflectivity from a period of 11:07–11:30 UTC corresponding to white, yellow, and purple segments in (a). A break line at around 7.1 km is the location of contaminating ground clutter via the side antenna’s side lobe (Sect. 3.1), which was filtered out.

and -10°C , two IWC– Z relations at $T = -5^\circ \text{C}$ ($\text{IWC} = 0.257Z^{0.391}$) and at $T = -10^\circ \text{C}$ ($\text{IWC} = 0.253Z^{0.596}$) were obtained by fitting power-law curves to scatter plots of all the data points at those two temperature levels (Wolde et al., 2016).

5.1 Case study I: 26 May flight

In this case, a 20 min segment of the Convair flight inside an Oceanic MCS on 26 May 2105 is selected for analysis. The MCS was sampled north-northwest of Cayenne, French Guiana, during early morning hours. Figure 4a shows IR satellite imagery obtained during the flight where the aircraft’s flight track is shown in different colours, which represent the aircraft’s location at different time segments. The reflectivity field from the NAX side antenna is shown in Fig. 4b. The selected period begins at a point when the aircraft started to sample at the proximity of the convective core of the storm with the lowest cloud-top brightness temperature (white segment in the IR image). The brightness temperature was increasing toward the end of the segment (magenta seg-

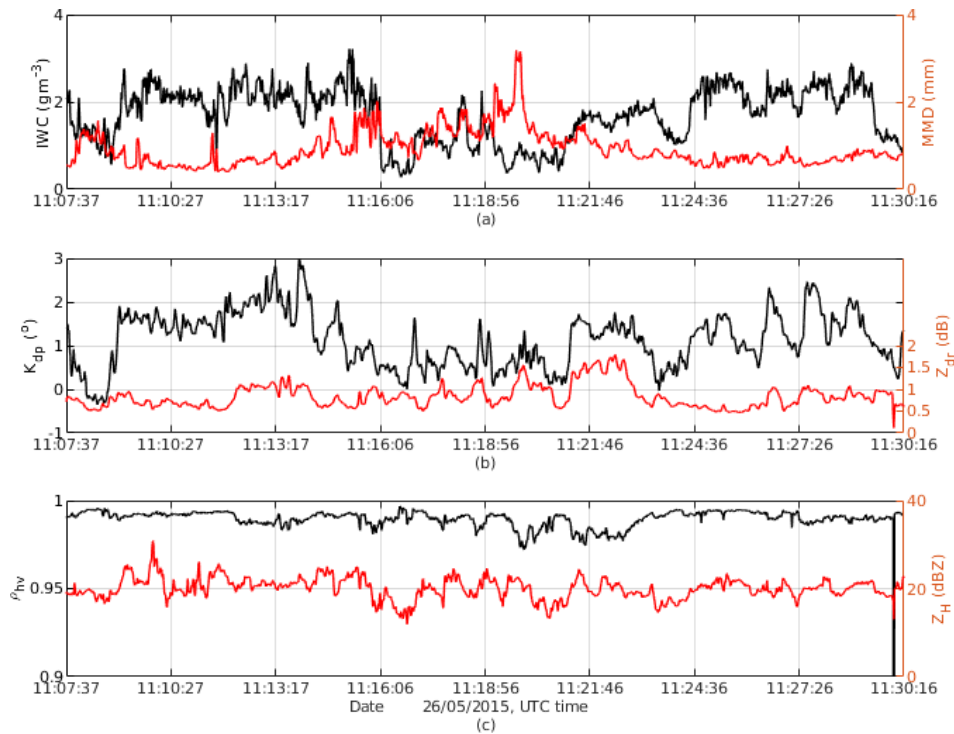


Figure 5. Time series of (a) IWC_{PSD}, MMD, (b) K_{dp} , Z_{dr} , (c) ρ_{hv} , and Z_H for 26 May Convair CV-580 flight.

ment). The aircraft flew between 6.9 and 7.2 km altitude and the static air temperature (T_s) varied from -12.8 to -8.2 °C. In addition to the radar data, IWC_{PSD} and MMD time series from particle probes are shown in Fig. 5. The IWC estimates from radar data have been decimated to match with the temporal resolution of the in situ data.

The aircraft sampled two regions: a convective region before 11:23 UTC and a stratiform region after 11:25 UTC (Fig. 4b), with IWC in both regions mostly higher than 1.5 g m^{-3} (Fig. 5a). It is worth noticing that the reflectivity measurements along the flight path were fairly constant at $\sim 20 \text{ dBZ}$ and the MMD values were relatively small at HIWC regions ($\text{IWC} > 1.5 \text{ g m}^{-3}$) (Fig. 5a). From Fig. 5, it follows that (1) K_{dp} , in general, is highly correlated with IWC; (2) K_{dp} increases at the regions dominated by small ice crystals (between 11:08 to 11:16 and 11:24 to 11:27 UTC); and (3) regions with larger MMD exhibit decreasing ρ_{hv} and increasing Z_{dr} . In Fig. 6, Z_{dr} , ρ_{hv} , and IWC are expressed as functions of K_{dp} . In this case, there is a break point at $K_{dp} \approx 1.5^\circ \text{ km}^{-1}$ (and $Z_{DR} \sim 1.12$) where Z_{dr} started increasing and ρ_{hv} decreased with respect to K_{dp} . At $K_{dp} < 1^\circ \text{ km}^{-1}$, Z_{dr} was mainly flat and IWC linearly increased with respect to K_{dp} (Fig. 6b). This suggests the pristine ice crystals' axis ratio might be fairly constant, but the particle number density increased, resulting in an enhancement in both K_{dp} and IWC (shown by a linear IWC– K_{dp} relationship). From $K_{dp} > 1^\circ \text{ km}^{-1}$, the Z_{dr} increment with respect to K_{dp} was greater, but the IWC increase does not follow the

same degree as in the previous segment. If a linear IWC– K_{dp} relationship derived from the first segment ($K_{dp} < 1^\circ \text{ km}^{-1}$) is applied to the second portion, IWC will be overestimated. It is not easy to identify the exact reasons of this observation. Many factors could contribute to this circumstance such as changes in ice crystals' size, shape, orientation (e.g. particles with higher axis ratio that are aligned in the horizontal plane), or particle density. In this work we used K_{dp} and Z_{dr} to mitigate this dependency and improve estimation of IWC. In Fig. 6b and c, measured IWC and their linear fitting curves ($1 - Z_{DR}^{-1}$)IWC are shown as solid black lines and their linear fitting curves (red lines) are superimposed. The R^2 goodness-of-fit parameter indicates that a linear regression fits $(1 - Z_{DR}^{-1})$ IWC better in comparison to IWC.

To gauge the performance of the polarimetric methods, results from the conventional IWC– Z estimator are also included in Fig. 7a. This figure shows the measured IWC along the Convair's flight path depicted in black, IWC– Z results in green, and IWC estimates using polarimetric methods in blue and red for K_{dp} -only and (K_{dp}, Z_{DR}) algorithms, respectively. One can observe that the two polarimetric methods agree well with measured IWC while the IWC estimates from just using radar reflectivity exhibit biases as large as 1 order of magnitude. The large errors in the IWC– Z estimator are due to the presence of mixtures of large aggregates and small ice crystal regions as indicated in the PIP images (not shown) in clouds. Large aggregates have a dom-

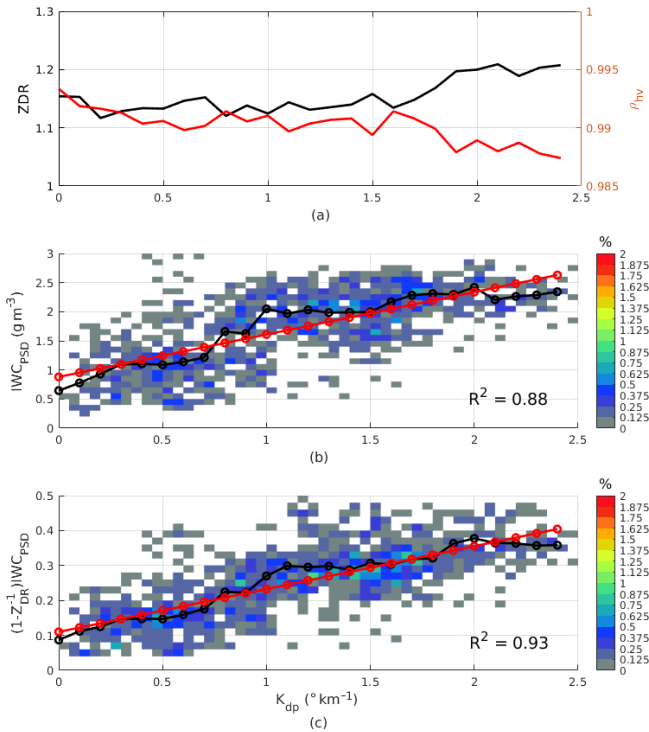


Figure 6. Z_{DR} and ρ_{hv} (a), IWC_{PSD} (b), and $(1 - Z_{DR}^{-1})IWC$ (c) as functions of K_{dp} . In panels (b) and (c), mean values and frequency distributions are computed from data points in each K_{dp} bin of 0.1 and $0.05^\circ \text{ km}^{-1}$, respectively. Regression parameters (a_1, b_1) for the K_{dp} -only method and (a_2, b_2) for the (K_{dp}, Z_{DR}) method are estimated from the mean values using a simple linear fitting algorithm.

inant contribution into the radar reflectivity, which explains the positive biases of the $IWC-Z$ estimates. On the other hand, K_{dp} is not biased toward large aggregates. The magnitude of K_{dp} in aggregates with $MMD > 2 \text{ mm}$ is usually smaller than 0.4° m^{-1} and in small ice particles (MMD in the range 0.3–1 mm) K_{dp} is between 0.6 and 1° km^{-1} (Fig. 8a). It follows that estimators utilizing K_{dp} information would overcome the large aggregate effects in radar volumes. It is worth noting that the two algorithms capture the IWC variation at the end of the segment well. If the in situ measurements are considered as the ground truth, the estimation biases are computed and shown in Fig. 7b. On average, biases are 0.082 and 0.018 g m^{-3} , and the root-mean-square differences (hereinafter referred to as the rms differences) are 0.49 and 0.48 g m^{-3} for the K_{dp} alone and (K_{dp}, Z_{DR}) methods, respectively. The correlation coefficients between IWC_{PSD} and estimated IWCs are 0.66 and 0.70 for the two methods. In this case study, the inclusion of Z_{dr} improves the accuracy of the IWC estimates.

5.2 Case study II: 23 May flight

For this case, a segment of the Convair flight on 23 May 2015 inside an MCS north of the Surinam coast and over French Guiana (Fig. 9a) is selected. The flight segment consists of a HIWC region of a very high concentration of small ice particles and a region of mixed moderately large aggregates and pristine ice crystals. This affords an excellent example to gauge the performance of the algorithms. In Fig. 9a, the selected segment is displayed in purple. The radar reflectivity field from the side antenna is shown in Fig. 9b. In this segment, the aircraft's altitude was between 6.74 and 6.78 km and T_s ranged from -11 to -8° C .

In addition to the radar data, IWC_{PSD} and MMD time series from particle-imaging probes are shown in Fig. 10. The aircraft sampled two small cores where IWC was higher than 1 g m^{-3} ($\sim 18:30$ and $\sim 18:34$ UTC). At these high IWC cores, the clouds were dominated by small ice particles (Fig. 11a) and MMD was in the $400 \mu\text{m}$ range. In contrast, for the flight segment between 18:36 and 18:44 UTC, when the temperature was higher, the aircraft sampled a mixture of large aggregates with sizes exceeding 6 mm and small ice particles (Fig. 11b), where the IWC was less than 0.5 g m^{-3} .

The IWC estimates from the methods are depicted in Fig. 12a. In the regions around the two HIWC peaks, results from the three estimators agree quite well with IWC_{PSD} . There are small biases in the outcomes of the two polarimetric algorithms that can be attributed to the errors of fitting linear regression models to the data and/or the difference in the sampling locations of the radar and the in situ data (Sect. 3.1). In the region after 18:38 UTC, the $IWC-Z$ results show very large errors due to the presence of aggregates in the clouds. The large aggregates dominate the measurements of radar reflectivity, resulting in positive biases of the $IWC-Z$ estimates (Fig. 12b). The errors for this case are as large as 300 % in most estimates. In contrast, both the polarimetric methods provide much better results compared to the conventional $IWC-Z$ method. They capture the variation in IWC at smaller scales (around 18:33:58 UTC) and larger scales (around 18:41:54 UTC) well. This again confirms that these algorithms are robust to the variation in ice crystal type, shape, and distribution. The rms differences and correlation coefficients for the K_{dp} -only and (K_{dp}, Z_{DR}) methods are $(0.84 \text{ g m}^{-3}, 0.41)$ and $(0.79 \text{ g m}^{-3}, 0.55)$, respectively. The combination of K_{dp} and Z_{DR} provides better results, which can be seen at the edges of the second IWC peak (indicated by ellipses) in Fig. 12a. At those regions, MMD (Fig. 10) and Z_{dr} (not shown) values are large. This may be an indication of ice crystals with a high axis ratio aligned in the horizontal plane. When this happens, the algorithm based on K_{dp} alone will overestimate IWC. On the other hand, the product $(1 - Z_{DR}^{-1})IWC$ already includes the particles' shape and orientation effects; thus, estimates based on it should yield better results. When large particles dominated the volume (af-

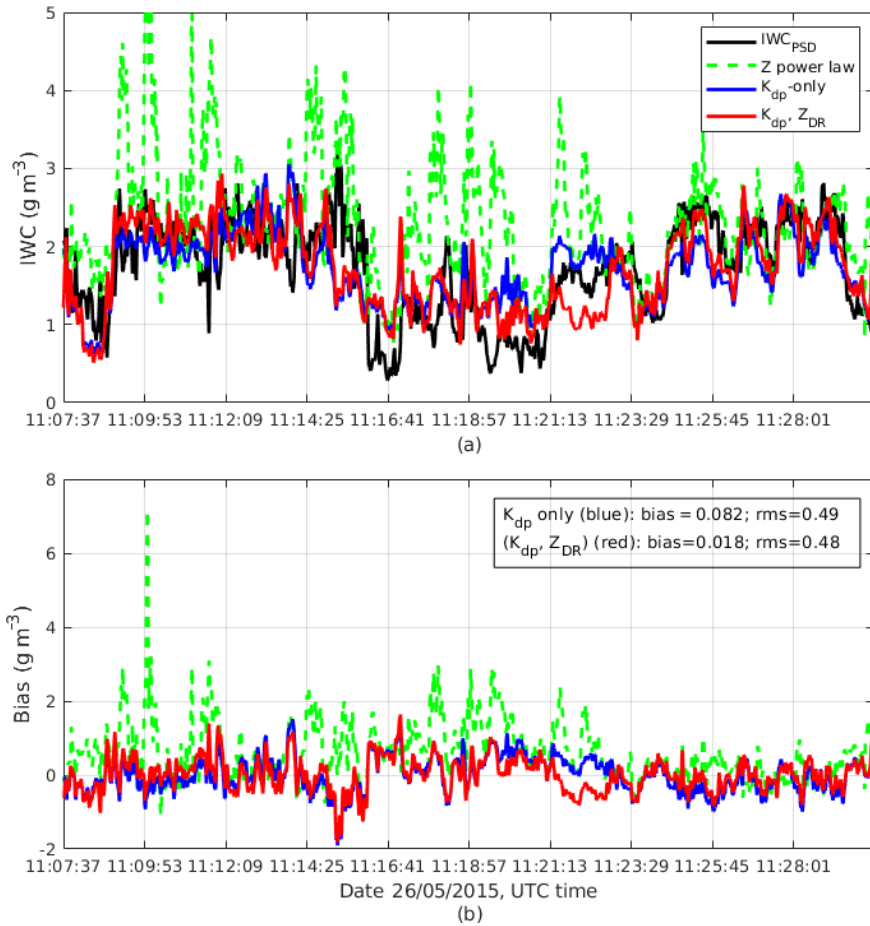


Figure 7. Panel (a) shows IWC_{PSD} (black line), estimated IWC using reflectivity (dashed green line), K_{dp} alone (blue line), and the (K_{dp}, Z_{DR}) combination (red line) for the 26 May case. Panel (b) shows estimation biases for the three estimators. Average biases for $IWC(Z)$, $IWC(K_{dp})$, and $IWC(K_{dp}, Z_{DR})$ are 0.60, 0.082, and 0.018 $g\ m^{-3}$ and rms differences are 0.98, 0.49, and 0.48 $g\ m^{-3}$ for the three algorithms, respectively.

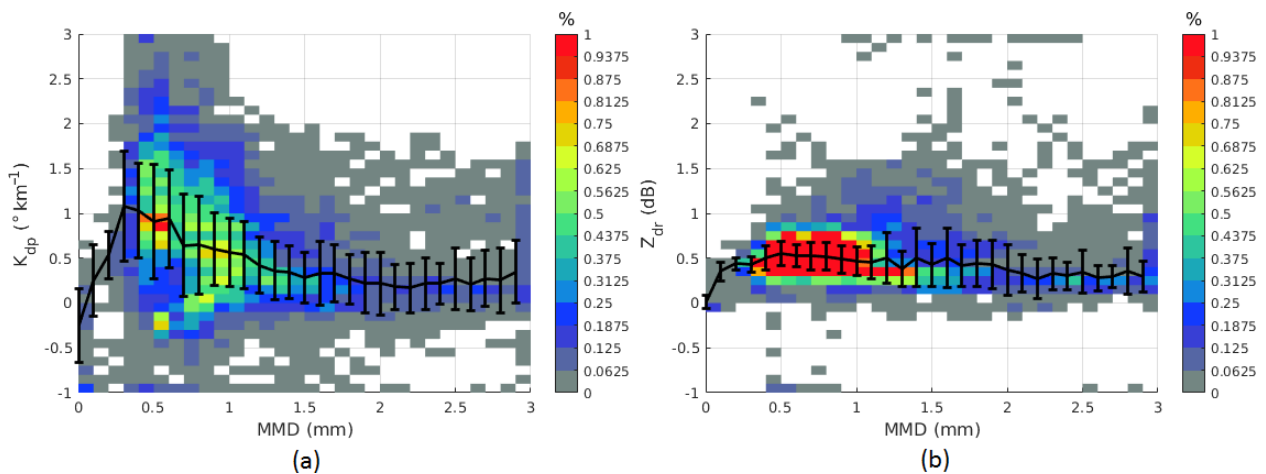


Figure 8. K_{dp} (a) and Z_{dr} (b) as functions of median mass diameter (MMD). Over 17 000 data points from seven selected flights (Sect. 6) during the Cayenne campaign are used.

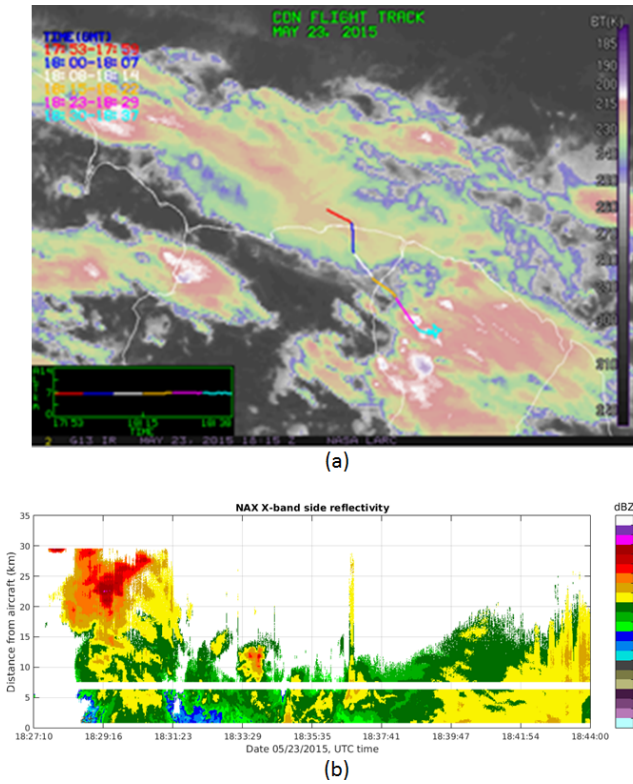


Figure 9. Similar to Fig. 4 but for the 23 May case.

ter 18:36:14 UTC) Z_{dr} become small (Fig. 8b), and then the (K_{dp}, Z_{DR}) estimator provides no advantage over the K_{dp} -only estimator.

6 Experimental evaluation

In the previous section, two case studies were analysed in detail. In both cases, results from the polarimetric methods show a much better agreement with in situ measurements compared to the IWC estimates from the radar reflectivity factor, especially when larger particles dominate the radar volume. In addition, applying a function of Z_{DR} to IWC before fitting a linear regression model to the data improves the estimation accuracy and correlation. In this section, more data from different flights collected during the mission were analysed and summarized. Out of total 14 campaign flights, there were seven flights with good data quality (radar and in situ) and with an applicable number of high-IWC data points, and data from those flights were used this analysis.

Z_{DR} threshold (Sect. 2.2) is determined from all selected data (17 699 points in total). In order to find an optimal Z_{DR} threshold from the available data, average bias and rms of IWC estimates are expressed as a function of the Z_{DR} threshold (Fig. 13). Z_{DR} threshold was changed within [1.01, 1.2] with 0.1 increments, and bias and rms were computed for each value of Z_{DR} threshold. In Fig. 13, average bias and rms

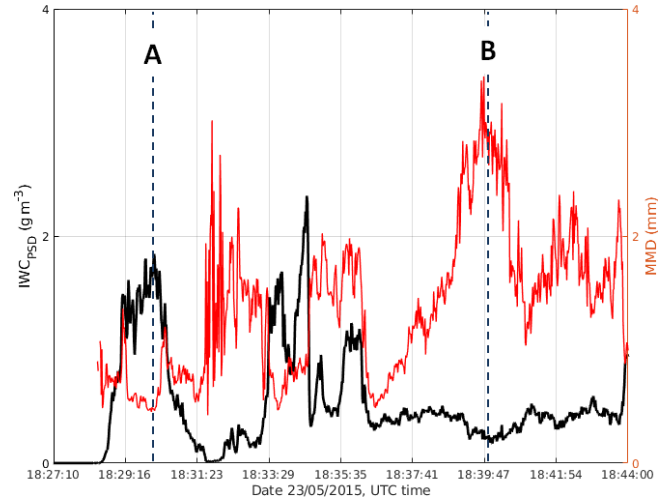


Figure 10. IWC_{PSD} and MMD time series for the 23 May case.

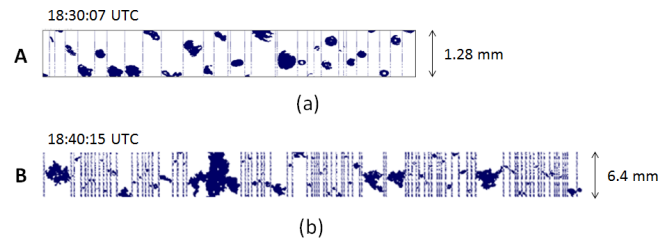


Figure 11. Samples of 2-D imagery from the SPEC 2D-S (a) and DMT PIP (b) probes at two time stamps as in Fig. 10. The width of the 2D-S image strip is 1.28 mm and that of the PIP is 6.4 mm. The aircraft’s altitude was 6.75 km at A and 6.74 km at B.

of IWC estimates from the K_{dp} -only algorithm, which are independent of Z_{DR} threshold, are also displayed (blue lines). It follows that the average biases for the two methods are very small (within $\pm 0.08 \text{ g m}^{-3}$) and the (K_{dp}, Z_{DR}) method provides unbiased estimates at a Z_{DR} threshold of 1.06. However, rms of the (K_{dp}, Z_{DR}) method is quite large at a small Z_{DR} threshold and reduces with an increasing Z_{DR} threshold. It becomes saturated at 0.498 g m^{-3} , which is slightly below the rms of the K_{dp} -only algorithm. Considering all the factors, we selected an optimal Z_{DR} threshold of 1.12, where rms values of the two methods are equal but the average bias is smaller with the (K_{dp}, Z_{DR}) method.

In Fig. 14, IWC and $(1 - Z_{DR}^{-1})\text{IWC}$ are expressed as functions of K_{dp} for selected flights. Linear fits to all the data from selected flights are also shown. The respective y axes are scaled to the maximum value of IWC and $(1 - Z_{DR}^{-1})\text{IWC}$ for comparison. For most cases, the linear relationships are well approximated up to $K_{dp} = 2^\circ \text{ km}^{-1}$. At larger K_{dp} , IWC saturates at 2.5 g m^{-3} and the IWC– K_{dp} relationship departs from the linear trend. Due to the limited amount of data of large measured K_{dp} and IWC, identifying

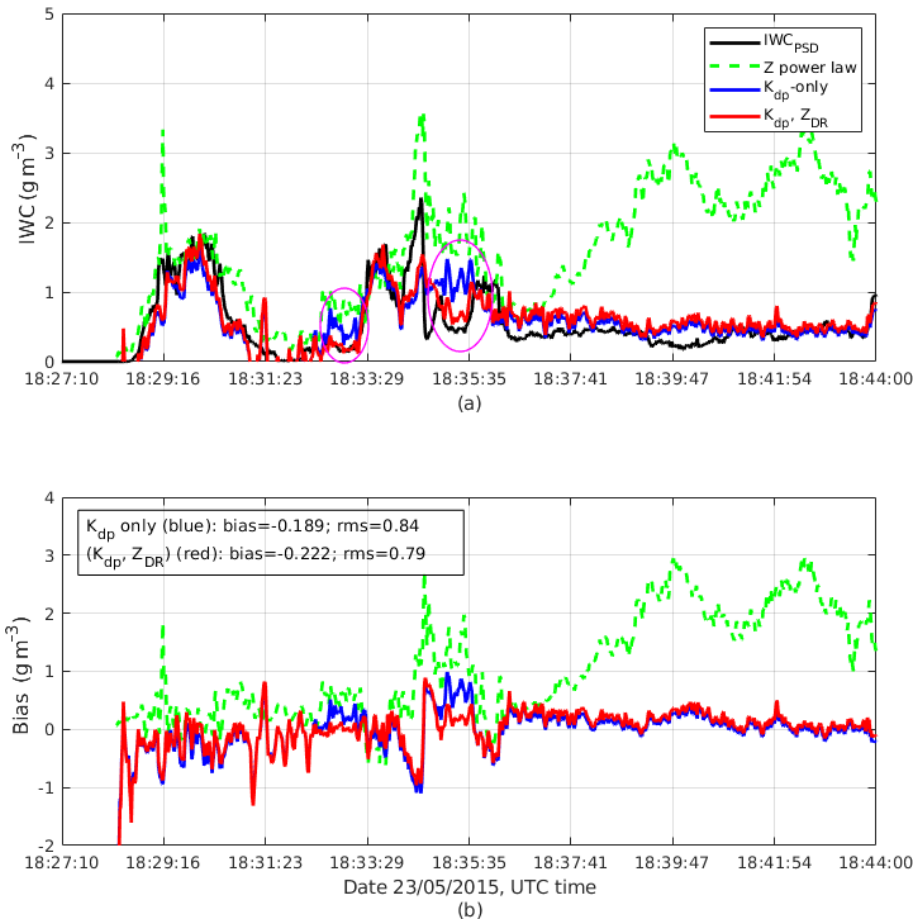


Figure 12. Similar to Fig. 7 but for the 23 May case. Average biases for IWC(Z), IWC(K_{dp}), and IWC(K_{dp} , Z_{DR}) are 1, -0.189 , and -0.222 g m^{-3} and rms differences are 1.34, 0.84, and 0.79 g m^{-3} for the algorithms, respectively.

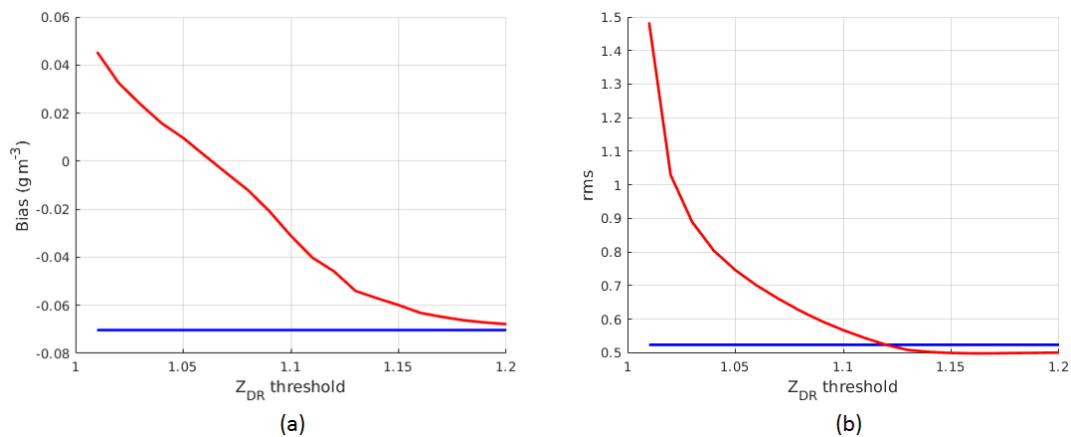


Figure 13. Average bias and rms as a function of Z_{DR} threshold for all data from the seven selected flights.

the major reasons for this saturation is not attempted. In these scenarios, applying a more sophisticated method (such as a parametric model) will likely reduce errors at high K_{dp} , but this is beyond the scope of this paper. Here, a simple linear

regression model (based on the approximation in Eq. 13) is used and errors are computed from all data points.

It is also worth noting that the deviation of the $(1 - Z_{DR}^{-1})$ IWC- K_{dp} curves from the linear fit is smaller compared

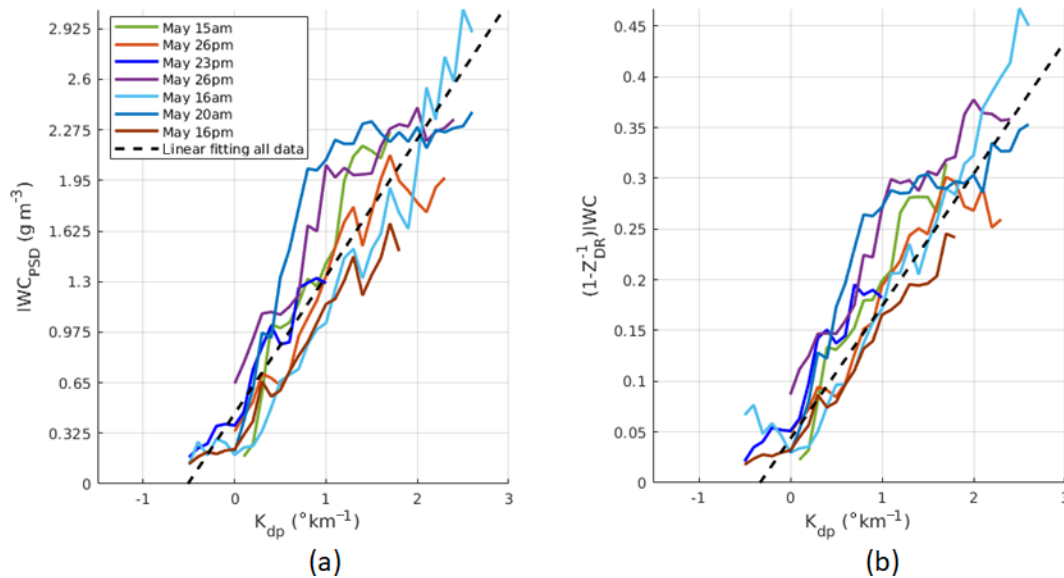


Figure 14. IWC_{PSD} (a) and $(1-Z_{DR}^{-1})IWC$ (b) as functions of K_{dp} for the seven selected flights. Linear fits (dash lines) are also plotted using coefficients computed from all data point (Table 2).

Table 2. Polarimetric method performance for selected flights during the Cayenne 2015 campaign. The MCS types and scales from Strapp et al. (2016) are also listed.

Flight	K_{dp} only				K_{dp} and Z_{dr}				MCS type/size in nautical miles
	(a_1, b_1)	Bias ($g\ m^{-3}$)	Rms ($g\ m^{-3}$)	Corr. coeff.	(a_2, b_2)	Bias ($g\ m^{-3}$)	Rms ($g\ m^{-3}$)	Corr. coeff.	
15 May morning	(1.11, 0.20)	-0.007	0.45	0.49	(0.14, 0.01)	0.009	0.42	0.60	Offshore/60
16 May morning	(0.90, 0.14)	-0.117	0.46	0.85	(0.15, 0.008)	-0.013	0.47	0.84	Offshore/70
16 May afternoon	(0.94, 0)	-0.051	0.34	0.80	(0.11, 0)	-0.019	0.30	0.82	Oceanic advected overland/60
20 May morning	(0.75, 0.9)	0.012	0.58	0.56	(0.10, 0.08)	0.005	0.61	0.56	Coastal
23 May afternoon	(1.07, 0.41)	-0.189	0.84	0.41	(0.19, 0.04)	-0.222	0.79	0.55	Offshore, and overland/100
26 May morning	(0.94, 0.7)	0.082	0.49	0.66	(0.12, 0.07)	0.018	0.48	0.70	Offshore MCS
26 May afternoon	(0.88, 0.18)	-0.046	0.37	0.72	(0.11, 0.02)	-0.048	0.34	0.78	Offshore MCS
All*		-0.070	0.53	0.69		-0.045	0.52	0.72	

* For all data points, optimal fitting parameters (0.88, 0.45) were used for the K_{dp} -only algorithm and (0.13, 0.04) were used for the (K_{dp}, Z_{DR}) algorithm.

to that of the original $IWC-K_{dp}$ curves. This spread in the $IWC-K_{dp}$ relationship can be attributed to the properties of ice crystals and the medium's state. In other words, when the dependency of the $IWC-K_{dp}$ relationship on ice crystal shape and orientation was removed (or partially removed), the spread in the $IWC-K_{dp}$ relationship around the linear fit should be smaller. This is a very important outcome which helps to reduce estimation errors when a single estimator is used for all the cases. Results for IWC estimates are shown in Table 2 for the two polarimetric methods only. In each row, statistical error analysis is shown for each flight with the optimal fitting model derived from data of that flight. Infor-

mation about MCS of selected flights is also provided. The last row displays results computed from all selected data of 17 699 points. In all cases, improvement in IWC estimation when Z_{dr} information is utilized in the algorithm is clear. For all data, the bias changes from -0.07 to $-0.045\ g\ m^{-3}$ and correlation coefficient increases from 0.69 to 0.72. The standard deviations of the fitting coefficients (a_1, b_1) for the K_{dp} -only method and for (a_2, b_2) for the (K_{dp}, Z_{DR}) method are (0.12, 0.33) and (0.032, 0.033), respectively. The uncertainty of the retrieval depends on the uncertainty in the fitting parameters as well as the values of K_{dp} and Z_{DR} and their measurement accuracy. Typical values of K_{dp} and Z_{DR}

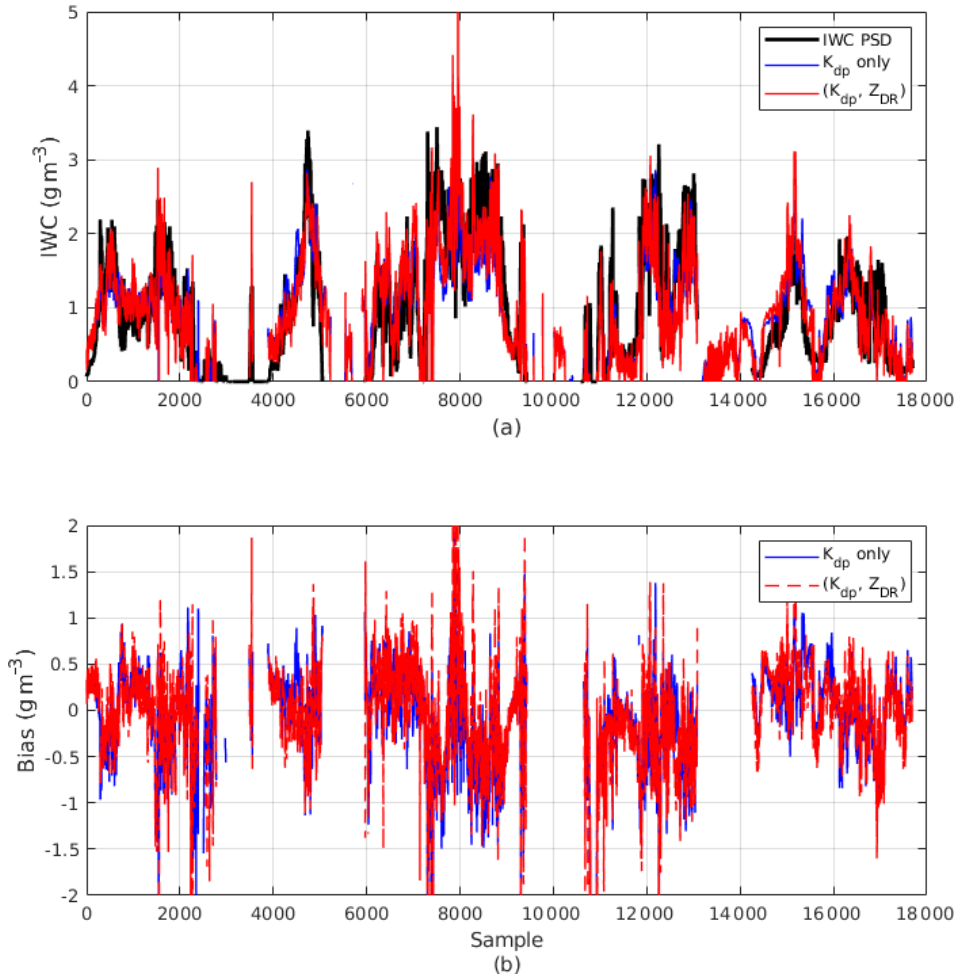


Figure 15. (a) Combined IWC time series data from the selected flights: measured IWC (black line), estimated IWC using K_{dp} alone (blue line), and estimated IWC using K_{dp} and Z_{DR} (red line). (b) Estimation errors for the two estimators. For all study cases, the aircraft flew in the range of [5.6, 7.5] km and most of the data points were within a temperature range of ($-10^{\circ}\text{C} \pm 25^{\circ}\text{C}$).

for HIWC regions (MMD between 0.3 and 1 mm) are about 1°km^{-1} and 1.12 (Fig. 8). At those typical values, standard deviation of IWC estimates using the (K_{dp}, Z_{DR}) algorithm is 0.6 g m^{-3} .

Figure 15 shows time series of IWC_{PSD} from the seven flights and estimated IWC from the two algorithms. As mentioned before, for each algorithm, a single set of fitting parameters is used for the combined data. Evidently, the method utilizing Z_{dr} yields better results in terms of estimation bias and correlation (Table 2). In Fig. 16, estimation bias and standard deviation are expressed as a function of IWC. It can be seen that inclusion of Z_{dr} improves estimation bias at all IWC points. On average, an improvement of 35% in average bias was achieved. As observed in Fig. 16, larger biases happen at IWC greater than 2 g m^{-3} . This is attributed to strong departures from the linear model in the joint IWC– K_{dp} distribution. The inclusion of Z_{dr} has been proven to be able to mitigate these large errors but not completely fix the problems. To improve the radar-derived IWC estimates

further, more additional data processing (such as hydrometeorology classification) and more sophisticated regression models are needed.

7 Conclusions

Accurate detection and estimation of HIWC in tropical mesoscale convective systems are critical for reducing hazards caused by the ingestion of ice particles into the engines of commercial aircraft. The objective of this paper is to find a method to improve IWC retrieval from a side-looking X-band dual-polarization airborne radar. It is shown that the use of the specific differential phase (K_{dp}) and differential reflectivity ratio (Z_{dr}) significantly reduces errors in IWC retrieval over the conventional IWC– Z method. In general, the IWC– K_{dp} relationship can be approximated by a linear model, and IWC retrieval using K_{dp} captures the IWC variation very well, regardless of the information of PSD. One

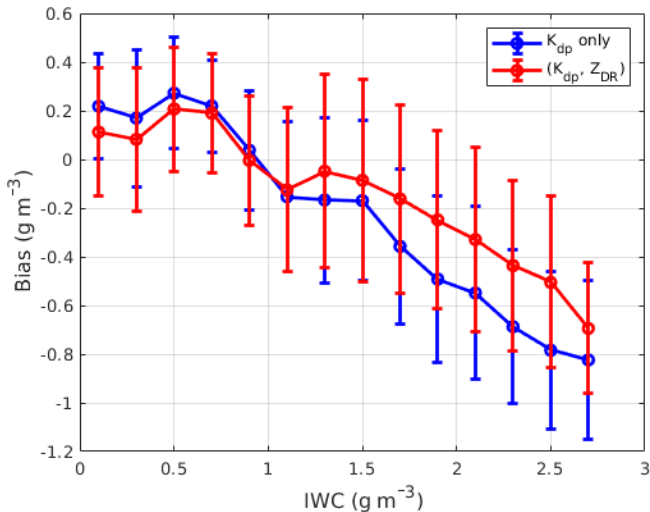


Figure 16. Bias and rms difference as a function of IWC derived from the seven selected flights. Mean values and standard deviation are computed from data points in each IWC bin of 0.2 g m^{-3} .

major drawback of the K_{dp} algorithm is that it provides large estimation biases when the ice particle's aspect ratio and orientation are changing. To mitigate this effect, Z_{dr} is used to reduce the dependency of IWC on the variation in ice particles' shapes and orientation. We proposed a method in which IWCs are weighted by a function of Z_{dr} before applying a linear model to the IWC– K_{dp} joint distribution. This approach uses an assumption of a low degree of riming within the radar volume. This is suitable for HIWC regions, which are often composed of a very high density of small ice particles. Z_{dr} at regions of mixtures of small pristine ice crystals and larger particles such as aggregates is generally low and will not be used in the weighting function. Results from selected Convaair CV-580 flights from the Cayenne campaign show that the proposed method is able to improve estimation biases by 35 % and correlation by 4 %, on average. In our analysis, a single set of fitting parameters is applied for all the data points. The results can be improved further by including advanced data processing techniques such as ice crystal type classification or using a more sophisticated regression model for the modified IWC– K_{dp} joint distribution.

Most of HIWC data points used in this are measured at a narrow window of the temperature range ($-10 \text{ }^\circ\text{C} \pm 2.5 \text{ }^\circ\text{C}$). More data are needed to study the temperature variability of the proposed method.

Data availability. The data used in this analysis are stored at the National Research Council database. Please contact the lead author for access to the data.

Author contributions. CN developed the algorithms, processed radar data, and performed the data analysis. MW was the flight mission scientist for all the flights and operated the radar. MW, AK, and Ivan Heckman (ECCC) processed the in situ data. The paper was written by CN. MW and AK have provided content for sections of the paper and also reviewed the draft and made some changes to the original draft.

Competing interests. The authors declare that they have no conflict of interest.

Acknowledgements. This work is supported by the FAA (NAT-I-8417) and the NRC RAIR programme. We would like to acknowledge Jim Riley, Tom Bond, and Chris Dumont of FAA and Steve Harrah of NASA for their support for this work. We thank the engineering, scientific, and managerial staff from NRC and ECCC, who made the project possible by working long hours during instrument integration and field operations. Special thanks are due to Ivan Heckman (ECCC) for support of processing cloud microphysical data. We would also like to acknowledge the support we received from the HAIC-HIWC community during the flight campaign.

Review statement. This paper was edited by Brian Kahn and reviewed by Alexander Ryzhkov and two anonymous referees.

References

- Aydin, K. and Tang, C.: Relationships between IWC and polarimetric measurements at 94 and 220 GHz for hexagonal columns and plates, *J. Atmos. Ocean. Tech.*, 14, 1055–1063, 1997.
- Bringi, V. N. and Chandrasekar, V.: *Polarimetric Doppler Weather Radar: Principles and Applications*, Cambridge University Press, 636 pp., 2001.
- Davison, C. R., MacLeod, J. D., Strapp, J. W., and Buttsworth, D. R.: *Isokinetic Total Water Content Probe in a Naturally Aspirating Configuration: Initial Aerodynamic Design and Testing*, 46th AIAA Aerospace Sciences Meeting and Exhibit, Reno, Nevada, AIAA-2008-0435, 2008.
- Fontaine, E., Schwarzenboeck, A., Delanoë, J., Wobrock, W., Leroy, D., Dupuy, R., Gourbeyre, C., and Protat, A.: Constraining mass–diameter relations from hydrometeor images and cloud radar reflectivities in tropical continental and oceanic convective anvils, *Atmos. Chem. Phys.*, 14, 11367–11392, <https://doi.org/10.5194/acp-14-11367-2014>, 2014.
- Grzych, M. and Mason, J.: Weather conditions associated with jet engine power loss and damage due to ingestion of ice particles: What we've learned through 2009, 14th Conf. on Aviation, Range and Aerospace Meteorology, Atlanta, GA, Amer. Meteor. Soc., 6.8, 2010.
- Hemsfield, A. J.: Precipitation development in stratiform ice clouds: A microphysical and dynamical study, *J. Atmos. Sci.*, 34, 367–381, 1977.
- Hogan, R. J., Mittermaier M. P., and Illingworth, A. J.: The retrieval of ice water content from radar reflectivity factor and temperature

- and its use in evaluating a mesoscale model, *J. Appl. Meteorol. Clim.*, 45, 301–317, 2006.
- Korolev, A., Heckman, I., and Wolde, M.: Observation of Phase Composition and Humidity in Oceanic Mesoscale Convective Systems, AMS Cloud Physics Conference, Vancouver, BC, 9–13 July 2018.
- Lawson, R. P., Angus, L. J., and Heymsfield, A. J.: Cloud particle measurements in thunderstorm anvils and possible weather threat to aviation, *J. Aircraft*, 35, 113–121, 1998.
- Leroy, D., Fontaine, E., Schwarzenboeck, A., and Strapp, J. W.: Ice crystal sizes in high ice water content clouds. Part I: Mass–size relationships derived from particle images and TWC for various crystal diameter definitions and impact on median mass diameter, *J. Atmos. Ocean. Tech.*, 34, 117–136, 2016.
- Lu, Y., Aydin, K., Clothiaux, E. E., and Verlinde, J.: Retrieving Cloud Ice Water Content Using Millimeter- and Centimeter-Wavelength Radar Polarimetric Observables, *J. Appl. Meteorol.*, 54, 596–604, 2015.
- Mason, J., Strapp, W., and Chow, P.: The ice particle threat to engines in flight, Proc. 44th AIAA Aerospace Sciences Meeting and Exhibit, Reno, NV, American Institute of Aeronautics and Astronautics, AIAA-2006-206, <https://doi.org/10.2514/6.2006-206>, 2006.
- Matrosov, S. Y., Reinking, R. F., Kropfli, R. A., and Bartram, B. W.: Estimation of ice hydrometeor types and shapes from radar polarization measurements, *J. Atmos. Ocean. Tech.*, 13, 85–96, 1996.
- Protat, A., Delanoë, J., Strapp, J. W., Fontaine, E., Leroy, D., Schwarzenboeck, A., Lilie, L., Davison, C., Dezitter, F., Grandin, A., and Weber, M.: The measured relationship between ice water content and cloud radar reflectivity in tropical convective clouds, *J. Appl. Meteorol. Clim.*, 55, 1707–1729, 2016.
- Rotemberg, J.: A Heuristic Method for Extracting Smooth Trends from Economic Time Series, NBER Working Paper No. 7439, 1999.
- Ryzhkov, A., Bukovcic, P., Murphy, A., Zhang, P., and McFarquhar, G.: Ice microphysical retrievals using polarimetric radar data, 10th European Conference on Radar in Meteorology and Hydrology, the Netherlands, 40, 1–6 July 2018.
- Ryzhkov, A. V., Zrnić, D. S., and Gordon, B. A.: Polarimetric method for ice water content determination, *J. Appl. Meteorol.*, 37, 125–134, 1998.
- Stocker, T. F., Qin, D., Plattner, G.-K., Tignor, M., Allen, S. K., Boschung, J., Nauels, A., Xia, Y., Bex, V., and Midgley, P. M. (Eds.): *Climate Change 2013: The Physical Science Basis*. Cambridge University Press, 1535 pp., 2013.
- Strapp, J.W., Korolev A., Ratvasky T., Potts R., Protat A., May P., Ackerman A., Fridlind A., Minnis P., Haggerty J., Riley J. T., Lilie L. E., and Isaac G.A.: *The High Ice Water Content Study of Deep Convective Clouds: Report on Science and Technical Plan*, DOT/FAA/TC-14/31, 2016.
- Vivekanandan, J., Bringi, V. N., Hagen, M., and Meischner, P.: Polarimetric radar studies of atmospheric ice particles, *IEEE T. Geosci. Remote*, 32, 1–10, 1994.
- Wang, Y. and Chandrasekar, V.: Algorithm for estimation of the specific differential phase, *J. Atmos. Ocean. Tech.*, 26, 2569–2582, 2009.
- Wolde, M. and Pazmany, A.: NRC dual-frequency airborne radar for atmospheric research, 32nd Conf. on Radar Meteorology, Albuquerque, NM, Amer. Meteor. Soc., P1R.9, 2005.
- Wolde, M. and Vali G.: Polarimetric signatures from ice crystals observed at 95 GHz in winter clouds. Part I: Dependence on crystal form, *J. Atmos. Sci.*, 58, 828–841, 2001.
- Wolde, M., Nguyen, C., Korolev, A., and Bastian, M.: Characterization of the Pilot X-band radar responses to the HIWC environment during the Cayenne HAIC-HIWC 2015 Campaign, vol. 8th AIAA Atmospheric and Space Environments Conference, AIAA Aviation, 2016, AIAA 2016-4201, 2016.