

**Figure S1.**  $^1\text{H}$  NMR spectrum of SWE A) *Sarcodiotheca gaudichaudii* B) *Chondrus crispus*.  $^1\text{H}$  NMR signals correspond to F—floridoside, I—isethtionic acid, T—taurine and C—L-Citrulline.

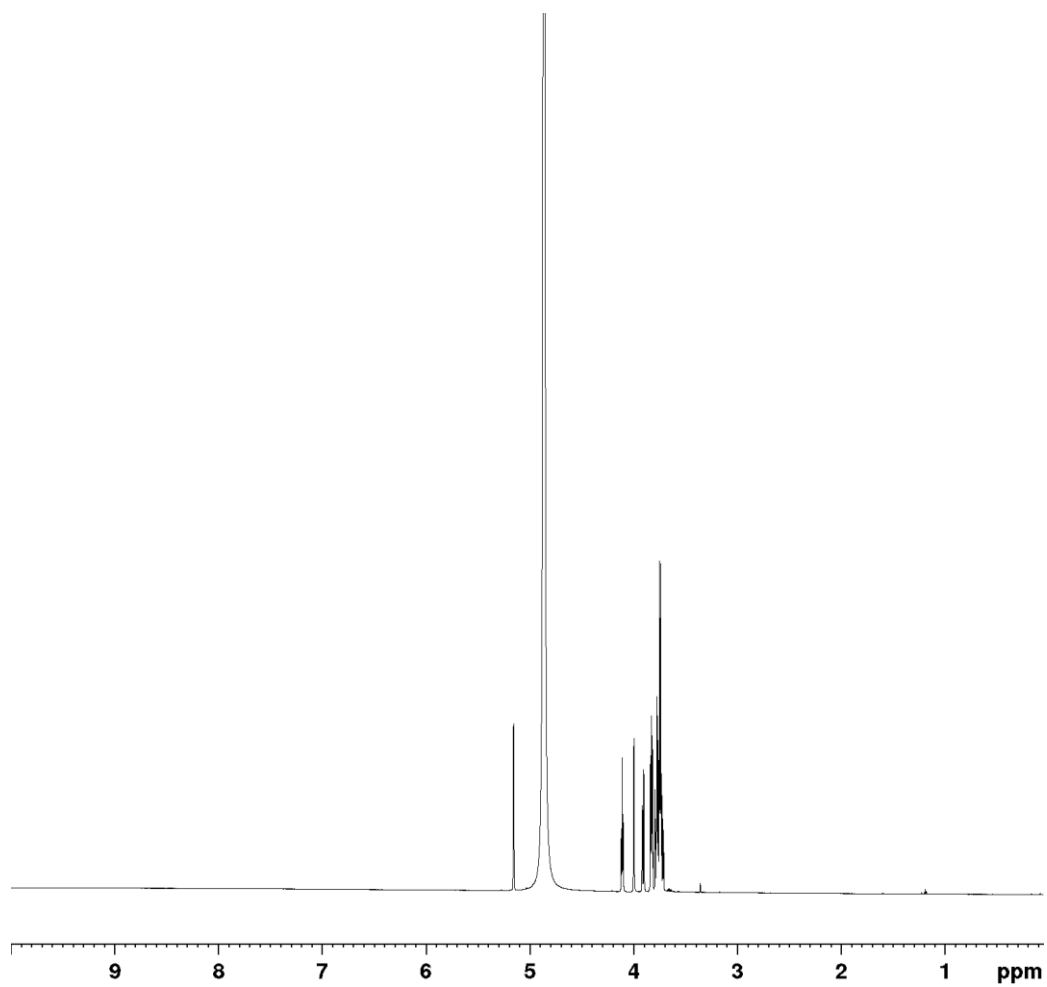


Figure S2.  $^1\text{H}$  NMR spectrum of floridoside isolated from *Chondrus crispus*.