

Supporting Information

Hot Carrier Photocatalysis Using Bimetallic Au@Pt Hemispherical Core-Shell Nanoislands

*Ajay P. Manuel,¹ Saralyn Riddell,¹ Harshitha Rajashekhar,¹ Damini Vrushabendrakumar,¹ Kazi Alam,^{1,2} Pawan Kumar,¹ Sergey Gusarov,² Alex Kobryn,² Mustafa Supur,³ Rick McCreery,³
Karthik Shankar^{1*}*

¹ Department of Electrical and Computer Engineering, University of Alberta, Edmonton, AB,
Canada, T6G 1H9

² Nanotechnology Research Center, National Research Council Canada, 11421 Saskatchewan
Drive, Edmonton, AB, Canada, T6G 2M9

³ Department of Chemistry, University of Alberta, Edmonton, AB, Canada, T6G 2G2

* Corresponding author's email address: kshankar@ualberta.ca

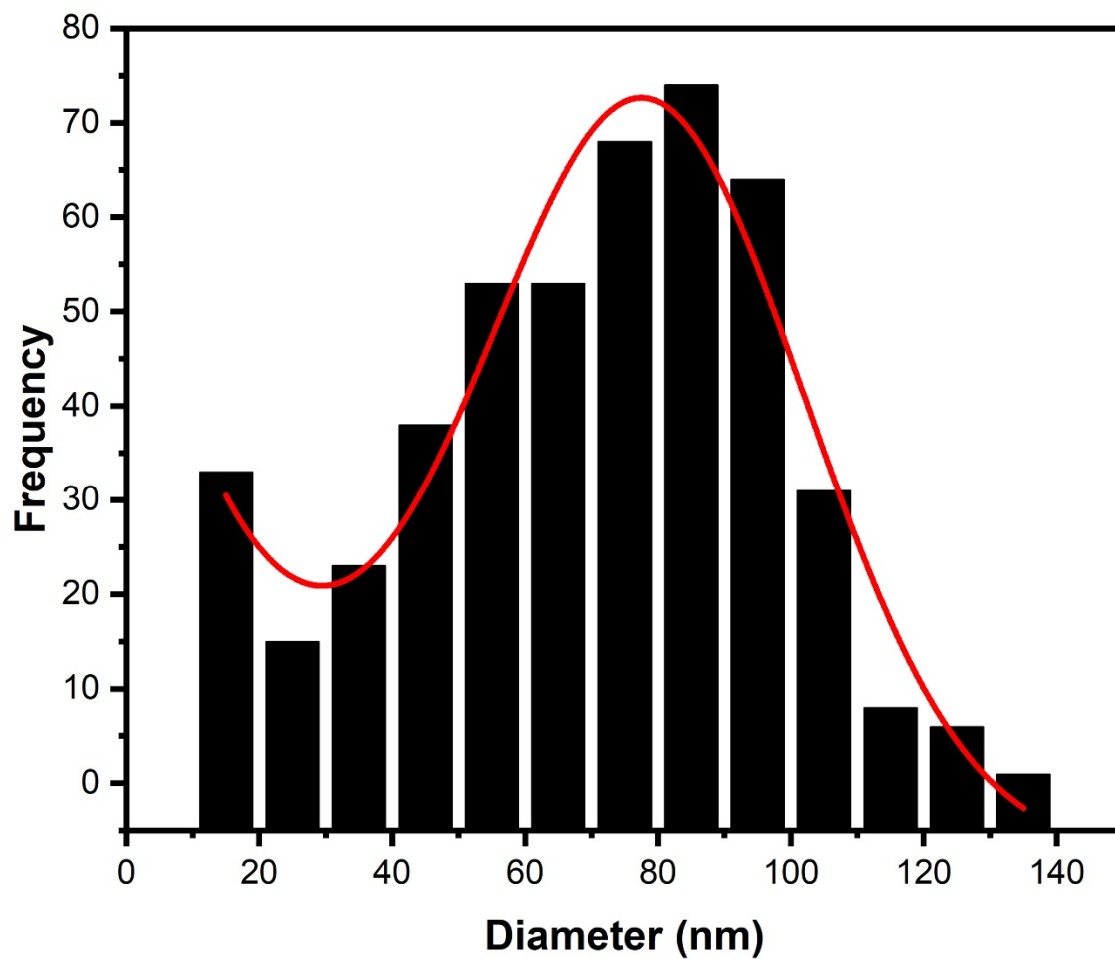


Figure S1. Au@Pt nanoisland size distribution histograms fitted with a Gaussian.

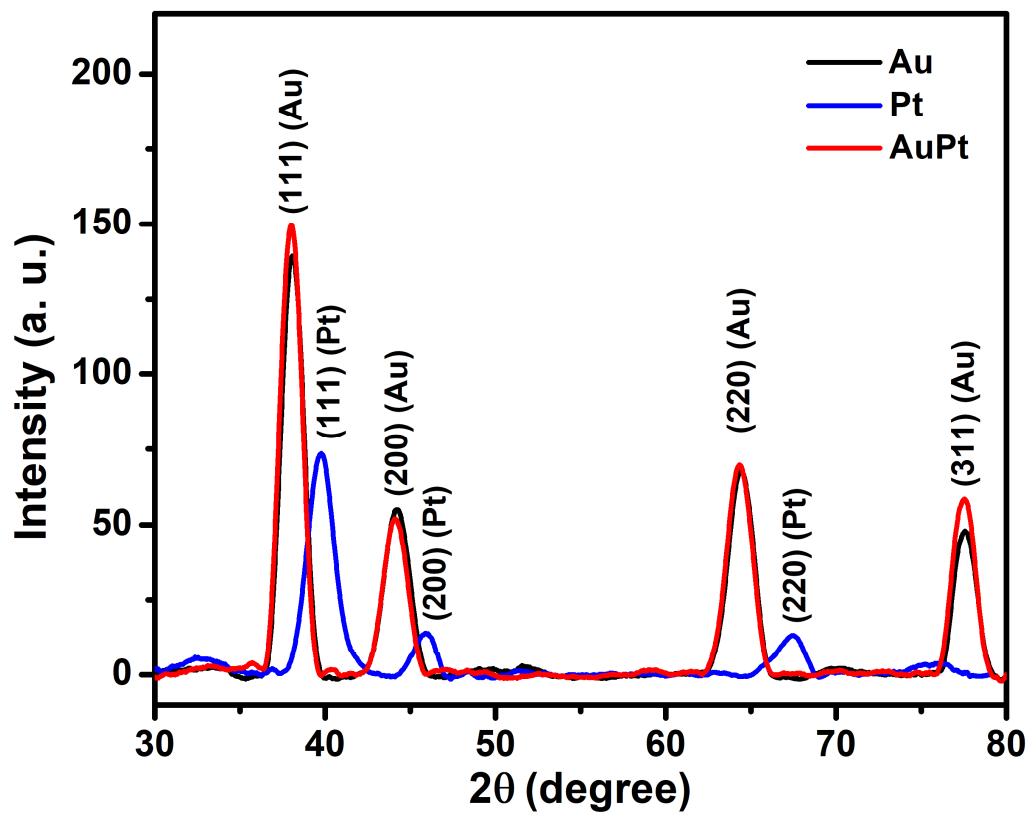


Figure S2. XRD plots of bare Au, bare Pt and AuPt hybrid showing the crystal planes of metallic face-centered cubic (fcc) phase.

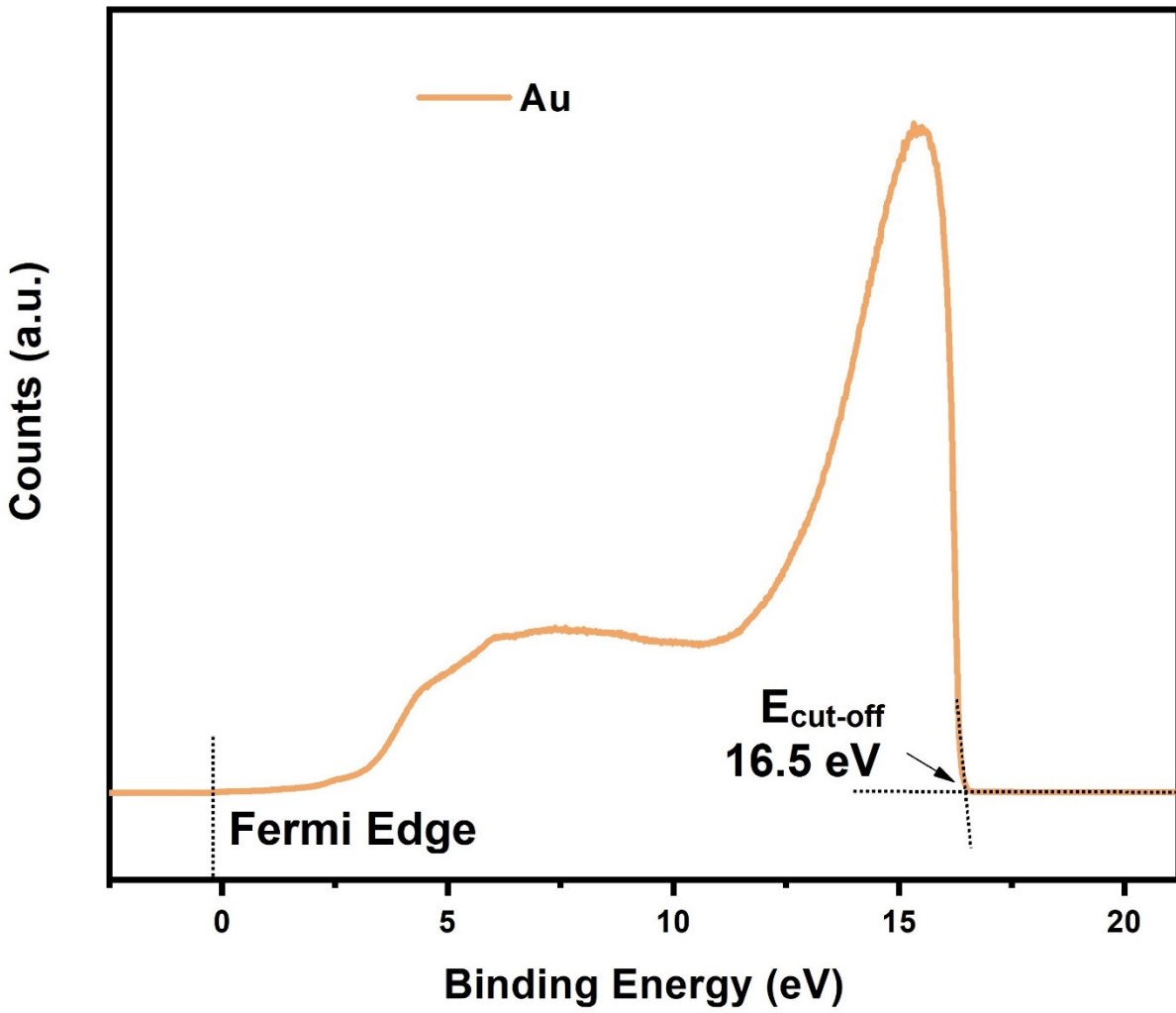


Figure S3. UPS spectra of monometallic Au film on glass substrates with its corresponding secondary electron energy cut-off value.

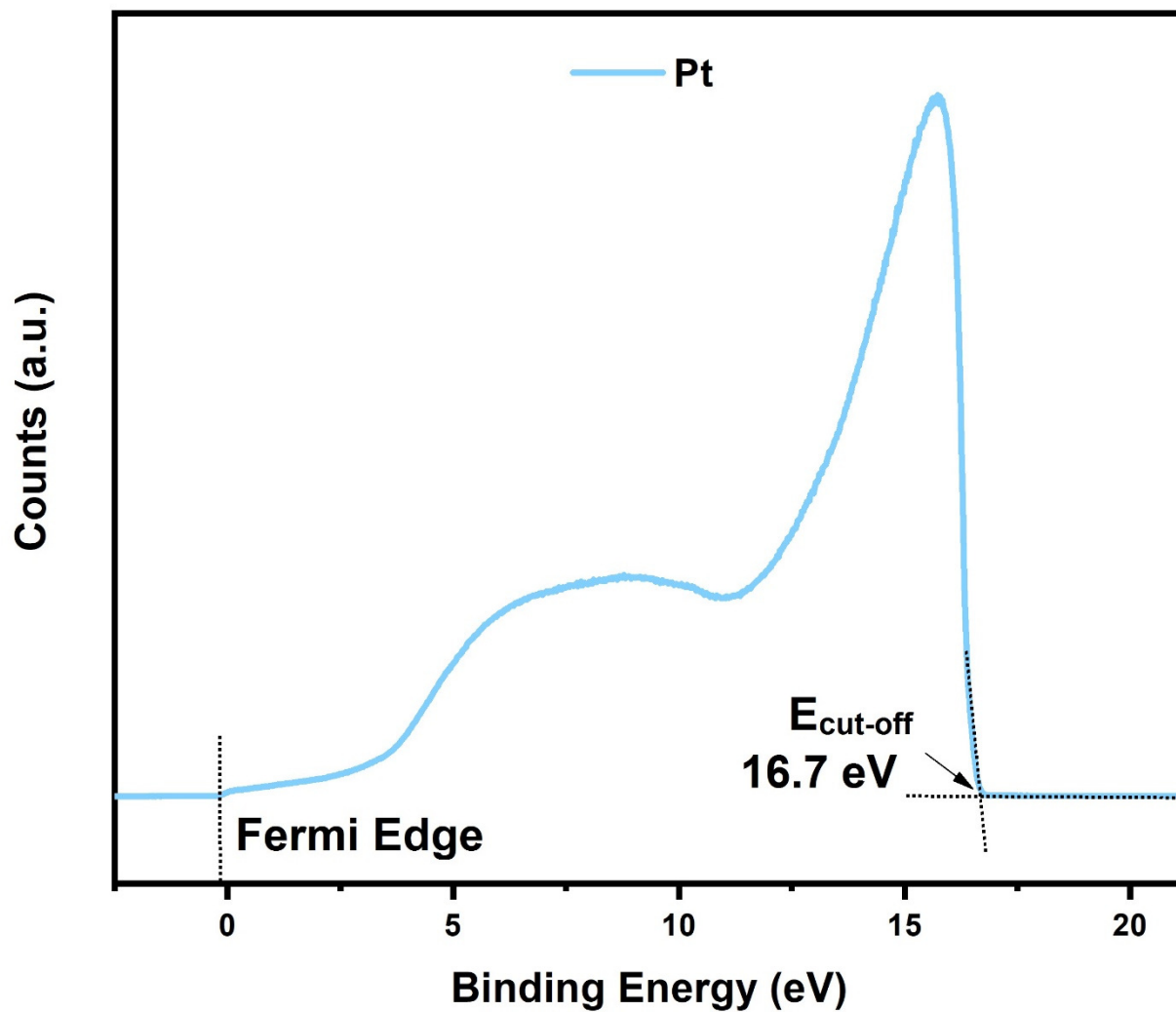


Figure S4. UPS spectra of monometallic Pt film on glass substrates with its corresponding secondary electron energy cut-off value.

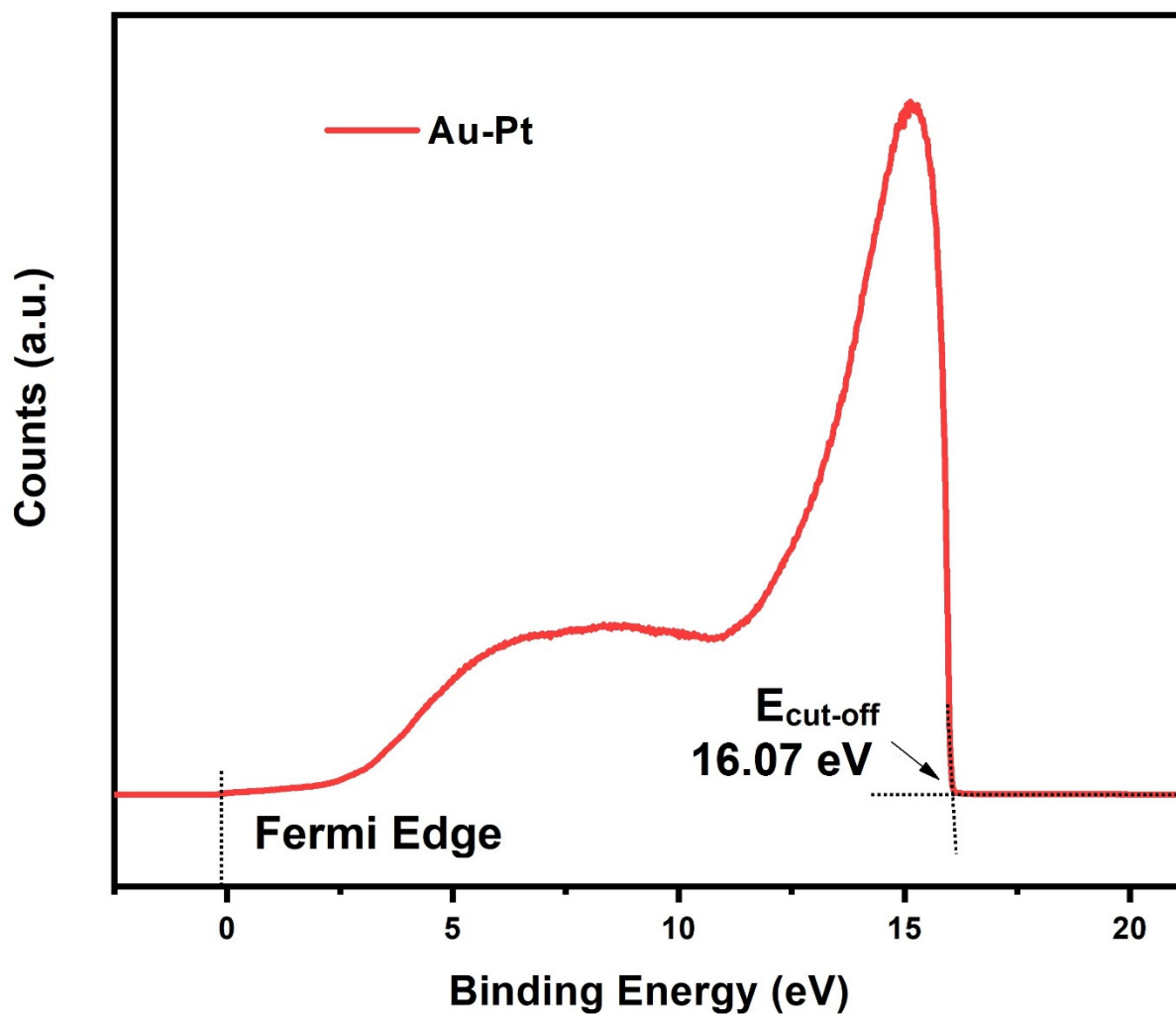


Figure S5. UPS spectra of Au@Pt core-shell nanoislands on glass with their corresponding secondary electron energy cut-off value.

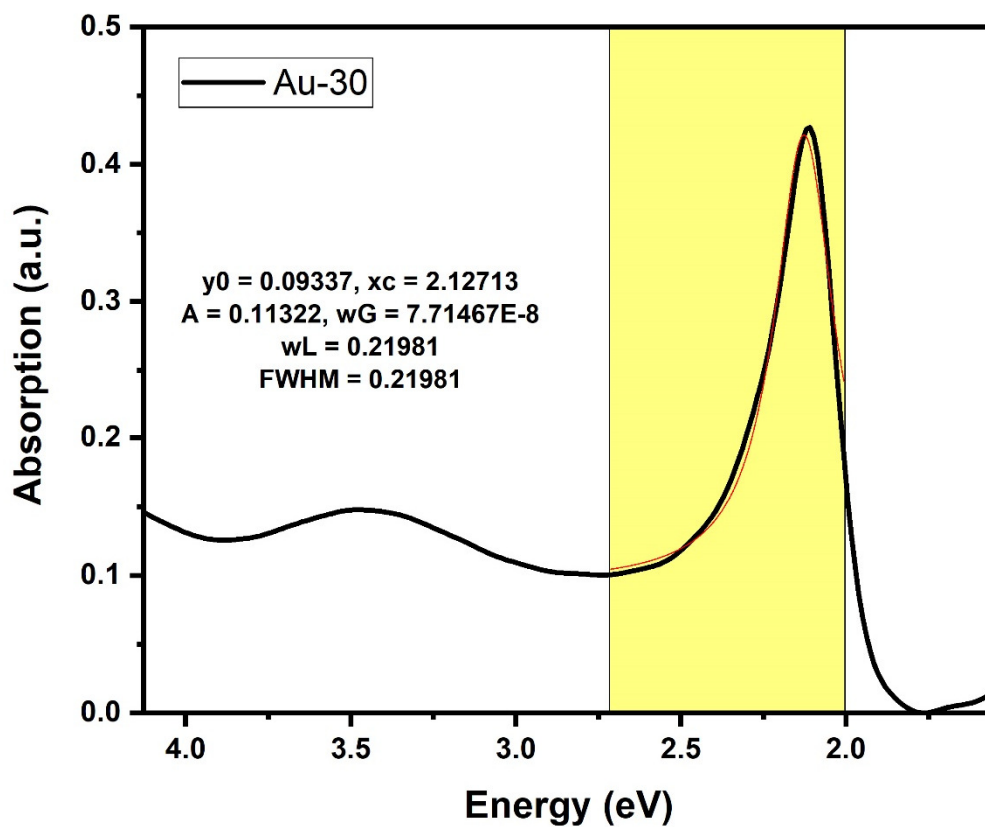


Figure S6. Optical spectrum of bare Au hemispherical nanoislands showing LSPR peak along with the corresponding fit to a Voigt function.

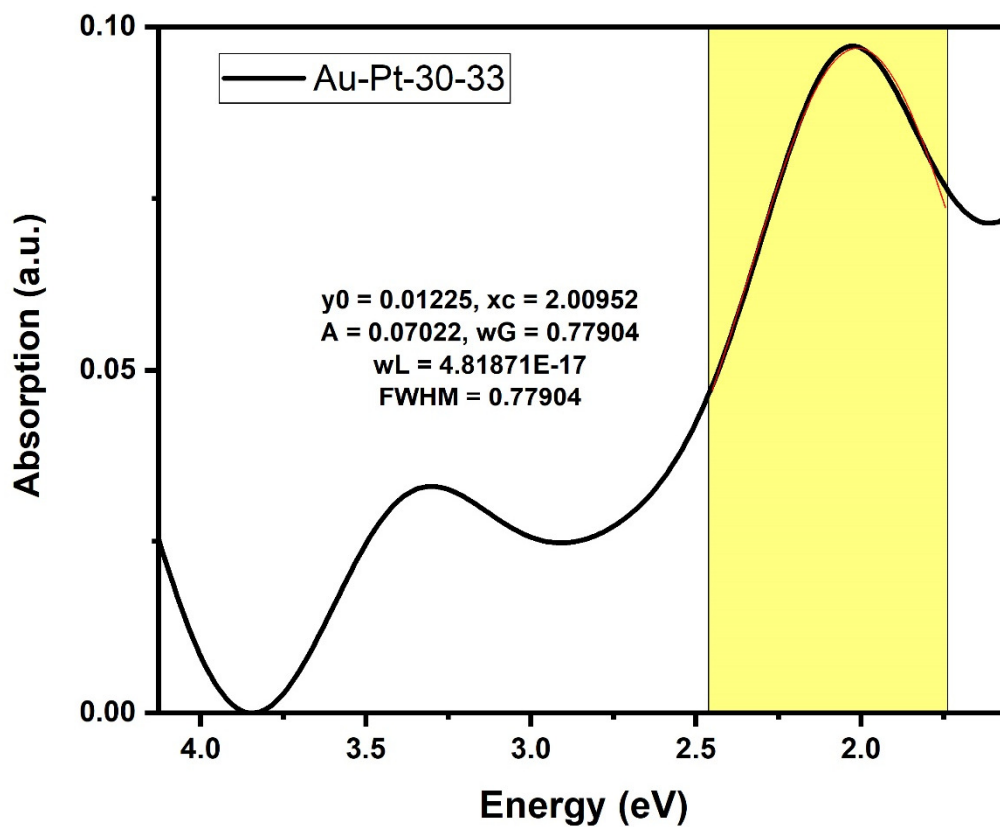


Figure S7. Optical spectrum of Au@Pt (3 nm Pt) hemispherical nanoislands showing LSPR peak along with the corresponding fit to a Voigt function. The LSPR peak is slightly redshifted and the peak width is dramatically broadened.