

Self-assembled vertically aligned Au nanorod arrays for surface-enhanced Raman scattering (SERS) detection of Cannabinol

Sarah Milliken, Jeff Fraser, Shawn Poirier, John Hulse and Li-Lin Tay*

National Research Council Canada, Measurement Science and Standards, Ottawa, ON, K1A0R6

*Email: lilin.tay@nrc-cnrc.gc.ca

Supplemental Information

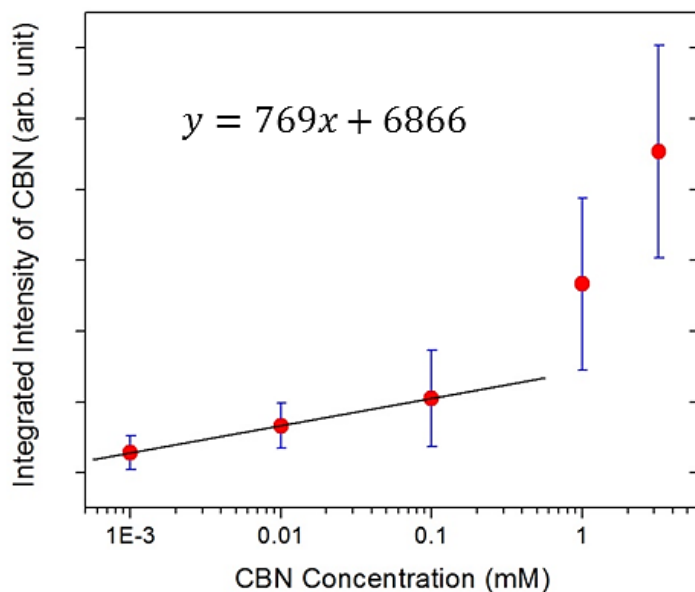


Figure S1. A calibration curve is fitted to the linear region of the integrated SERS intensity of 1585 and 1610 cm^{-1} band of the CBN spectra. The linear regression equation of the fitted region is shown in the figure. The scale step for the vertical division on the y-axis is 2000 counts/second.

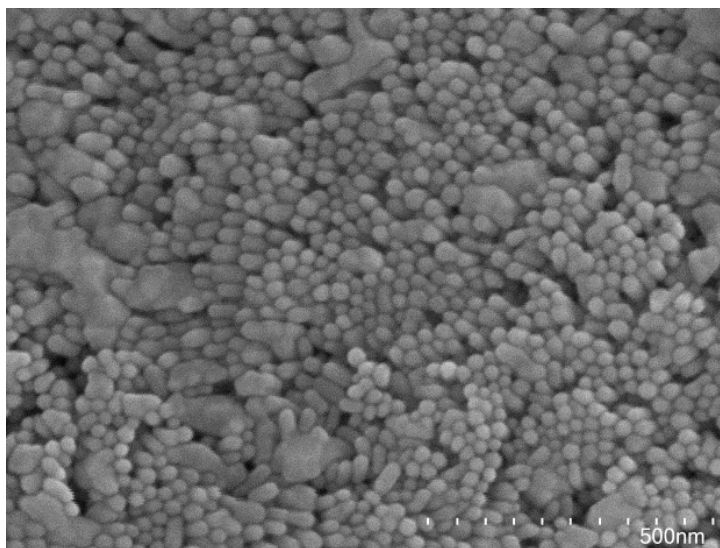


Figure S2. SEM image of AuNR array exposed to four consecutive 5 min of continuous UV-Ozone irradiation. Several patches of melted NR can be seen due to the heating and likely excessive removal of CTAB molecules.